

Anoka County Boat Launch Inventory

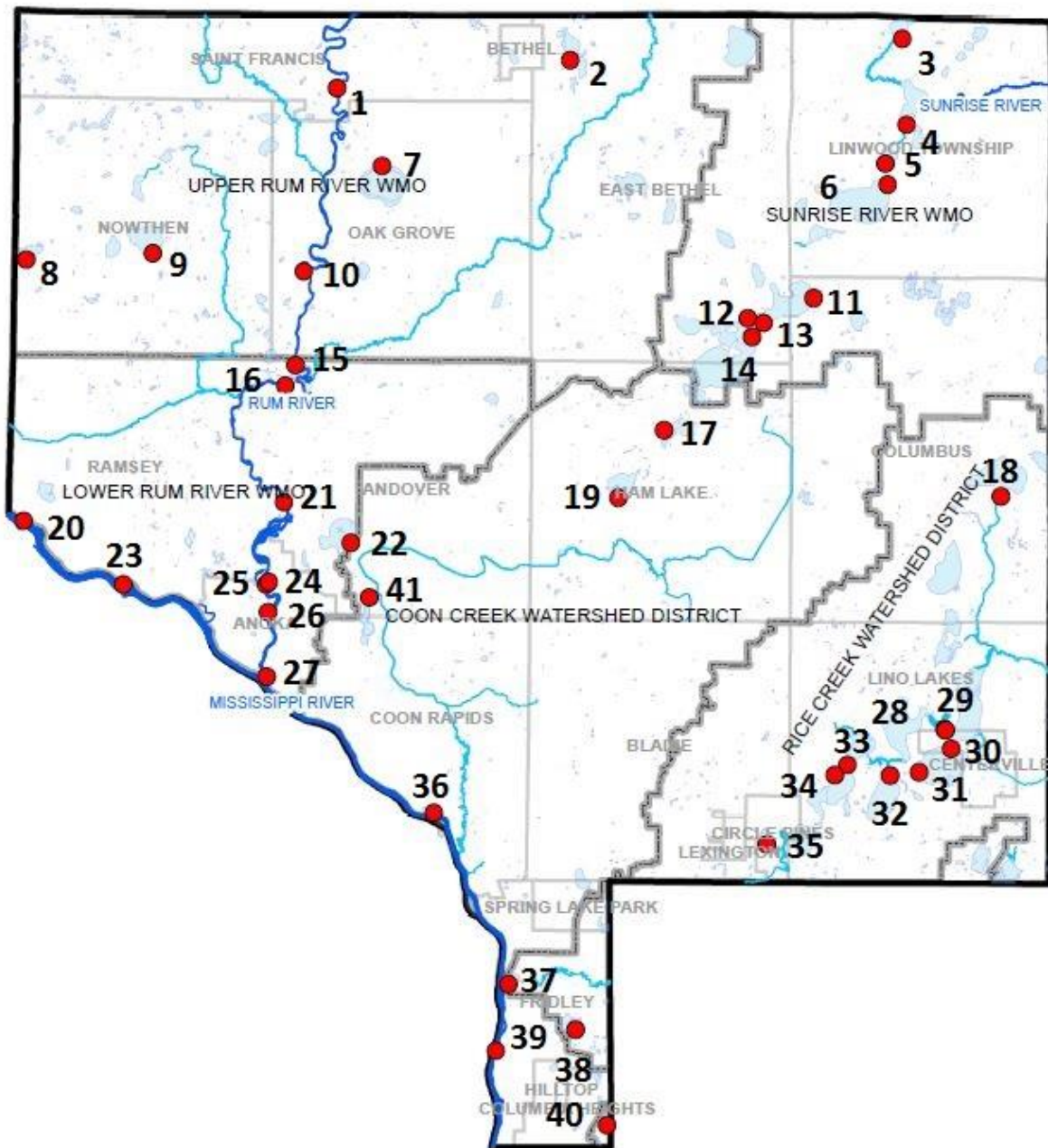
December 2014

Table of Contents

Map of boat launch locations in Anoka County.....	4
1. Rum River North County Park.....	5
2. Lake Minard	8
3. Typo Lake	11
4. Martin Lake	15
5. Island Lake.....	19
6. Linwood Lake	23
7. Lake George	28
8. East Twin Lake.....	34
9. Lake Pickerel	37
10. Rum River at Viking Boulevard.....	42
11. Coon Lake - North	45
12. Coon Lake - East	50
13. Coon Lake - N Dogwood Rd/ Coon Lake - N Forest Rd.....	55
14. Coon Lake Beach W Lincoln Dr.	61
15. Rum River Central Regional Park - North.....	64
16. Rum Central Regional Park - South.....	68
17. Lake Netta	73
18. Howard Lake	76
19. Ham Lake.....	82
20. Mississippi River - Highway 10 Rest-stop.....	87
21. Rum River - Strootman Park	91
22. Round Lake.....	95
23. Mississippi River - Mississippi West Regional Park	99
24. Rum River - Anoka High School.....	105
25. Rum River - Coolidge, Brom Canoe Rest Stop.....	109
26. Rum River – Rum River South County Park.....	113
27. Rum River - Akin Riverside Park.....	118
28. Peltier Lake – Canoe Launch	123
29. Peltier Lake - Trailer Launch.....	127

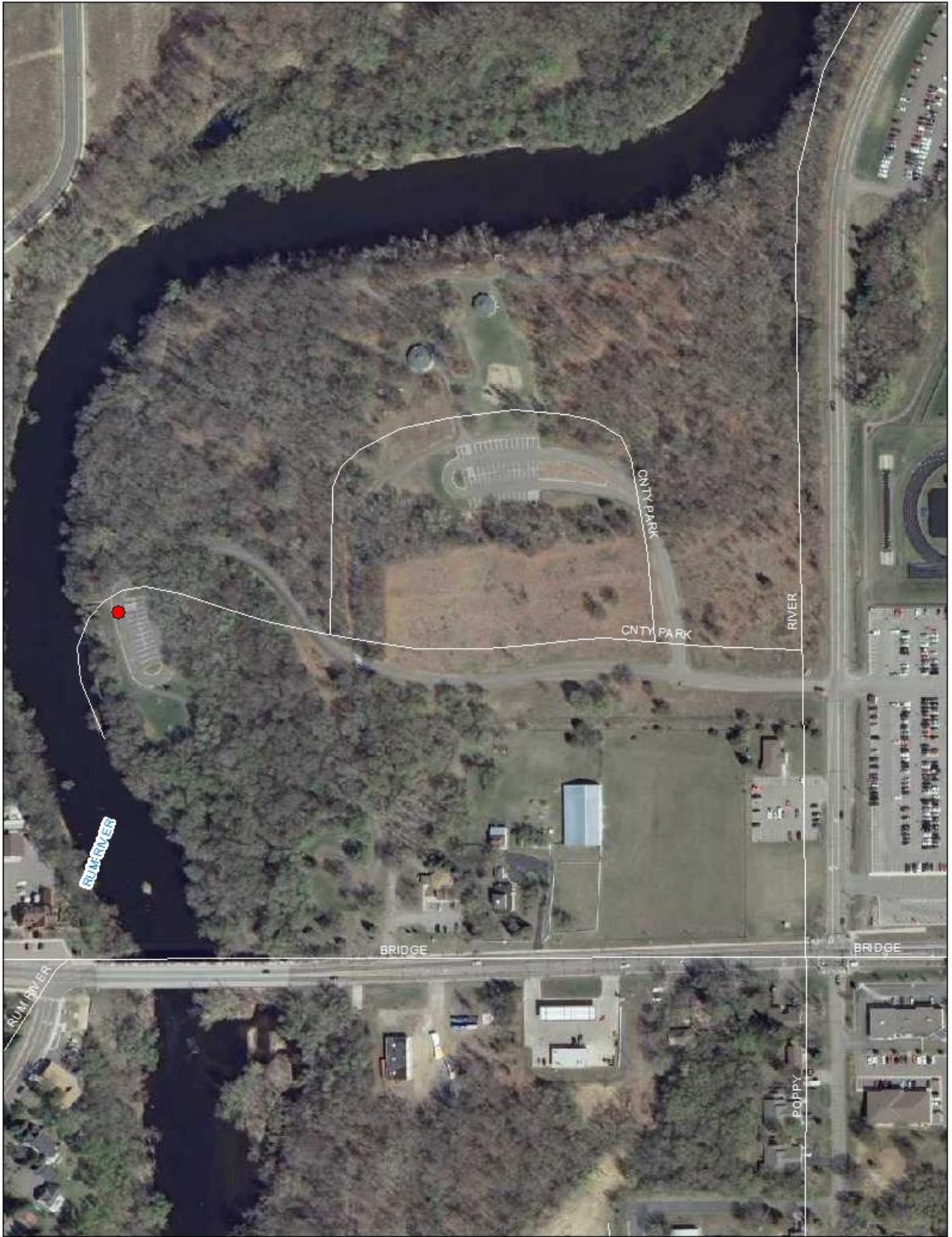
30.	Centerville - North.....	131
31.	Centerville - West.....	134
32.	Reshanau Lake - Private Residential	139
33.	Rice Lake - Rice Creek Entrance	142
34.	Rice Lake - Surfside Seaplane Base	144
35.	Golden Lake	147
36.	Mississippi River - Coon Rapids Dam Regional Park	151
37.	Locke Lake	155
38.	Moore Lake	158
39.	Mississippi River - Riverfront Regional Park.....	162
40.	Silver Lake	166
41.	Crooked Lake.....	171

Map of boat launch locations in Anoka County



1. Rum River North County Park

Task:	Answer	Yes?	No?	Maybe?	Description
Location (City & Watershed org.)	Saint Francis Upper Rum River WMO				
Owner/Operator	Anoka Co Parks				
Parking for trailers?		X			3
Parking for cars?		X			17
Disabled parking?		X			1
Ramp materials/condition	Wood steps down onto a cement slab				Carry in only
Dock(s)?			X		
Toilets?		X			1
Trash?		X			
AIS signage			X		
Use level-low, med, high	Med				
Presence of lake association or Lid?			X		



Parking Lot

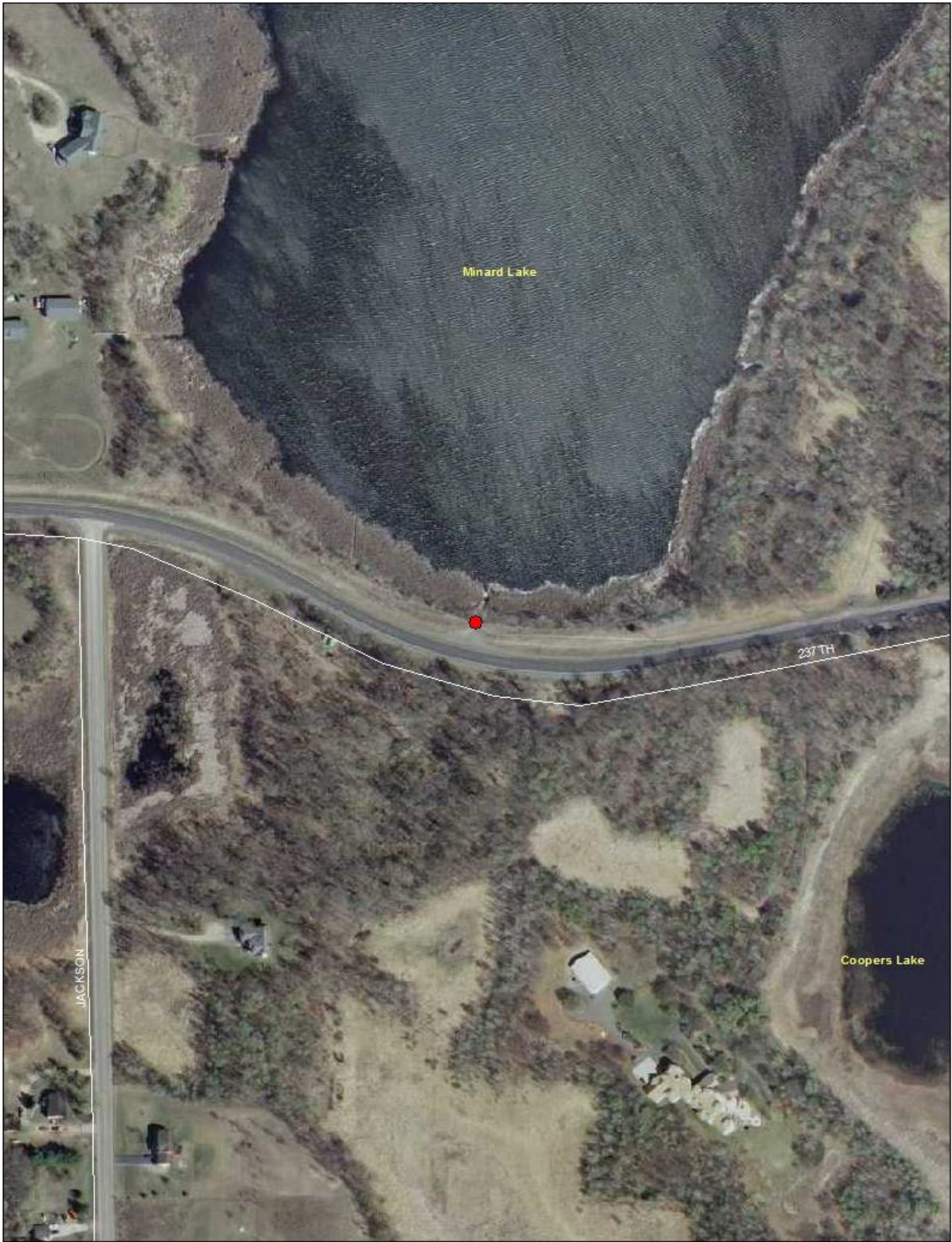


Ramp



2. Lake Minard

Task:	Answer	Yes?	No?	Maybe?	Description
Location (City & Watershed org.)	East Bethel Upper Rum River WMO				
Owner/Operator	Unknown				Not Managed
Parking for trailers?			X		
Parking for cars?			X		No formal parking
Disabled parking?			X		
Ramp materials/condition	Earth ramp just off of road				Eroded, Poor Condition
Dock(s)?			X		
Toilets?			X		
Trash?			X		
AIS signage			X		
Use level-low, med, high	Low				
Presence of lake association or Lid?			X		



Ramp



3. Typo Lake

Task:	Answer	Yes?	No?	Maybe?	Description
Location (City & Watershed org.)	Linwood Sunrise River WMO				
Owner/Operator	DNR T&W				
Parking for trailers?		X			10 Not lined
Parking for cars?		X			Lot not lined, can park anywhere
Disabled parking?			X		
Ramp materials/condition	Concrete Plank				Good Condition
Dock(s)?		X			
Toilets?			X		
Trash?			X		
AIS signage		X			
Use level-low, med, high	Low				
Presence of lake association or Lid?			X		



Ramp



AIS Signs



AIS Sign

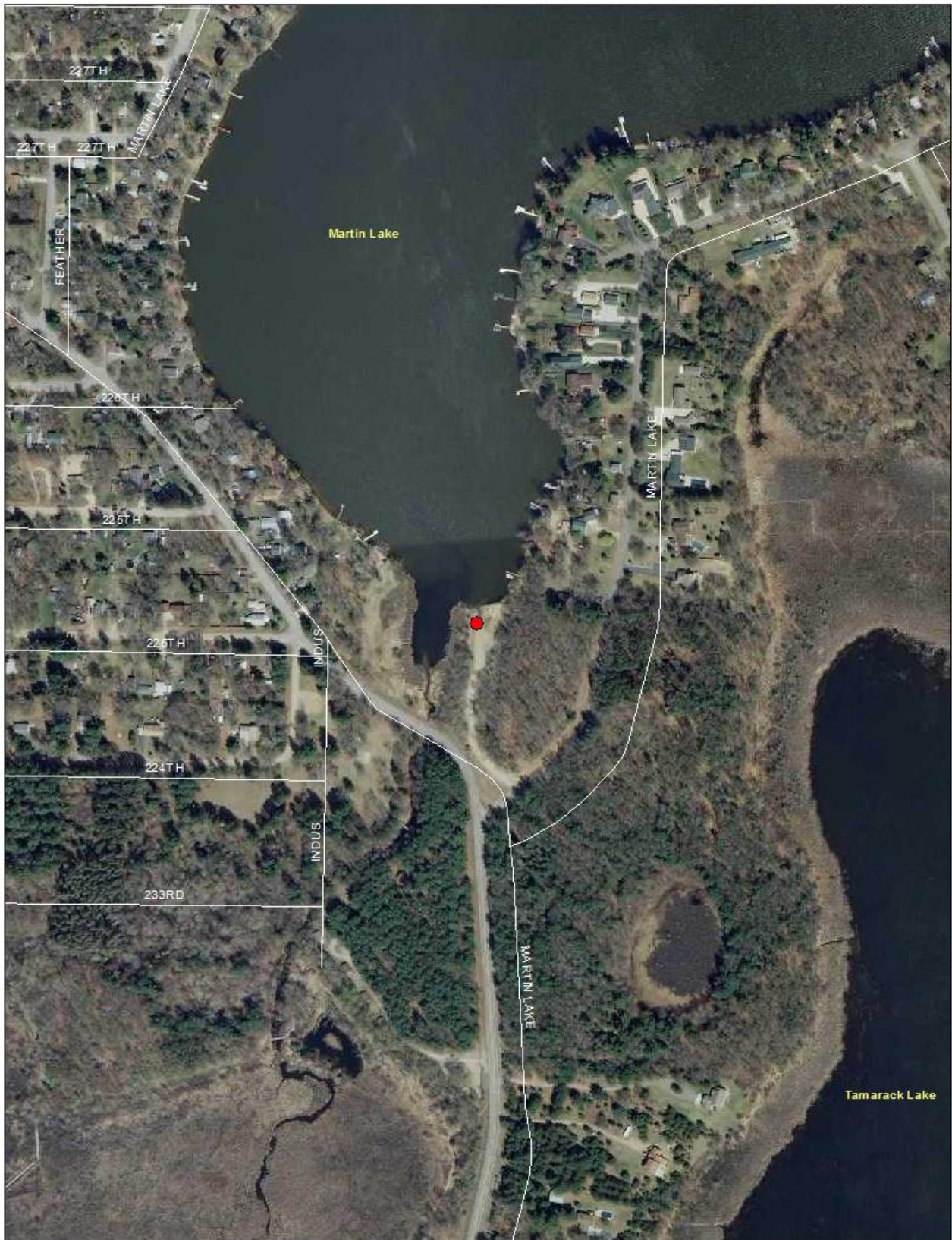


Unofficial Parking Lot



4. Martin Lake

Task:	Answer	Yes?	No?	Maybe?	Description
Location (City & Watershed org.)	Linwood Sunrise River WD				
Owner/Operator	Anoka Co Park				
Parking for trailers?		X			10
Parking for cars?		X			3
Disabled parking?		X			2
Ramp materials/condition	Concrete Slab				Single Lane Good Condition
Dock(s)?		X			1
Toilets?		X			1
Trash?		X			
AIS signage		X			
Use level-low, med, high	Med				
Presence of lake association or Lid?		X			



Bathroom/Trash



AIS Signs



Ramp



Parking Lot



5. Island Lake

Task:	Answer	Yes?	No?	Maybe?	Description
Location (City & Watershed org.)	Linwood Sunrise River WMO				
Owner/Operator	DNR T&W				
Parking for trailers?		X			No formal spots but enough room
Parking for cars?		X			No formal spots but enough room
Disabled parking?			X		
Ramp materials/condition	Earth/Gravel				Very eroded, Poor Condition
Dock(s)?			X		
Toilets?			X		
Trash?			X		
AIS signage			X		
Use level-low, med, high	Low				
Presence of lake association or Lid?			X		



Ramp



Ramp

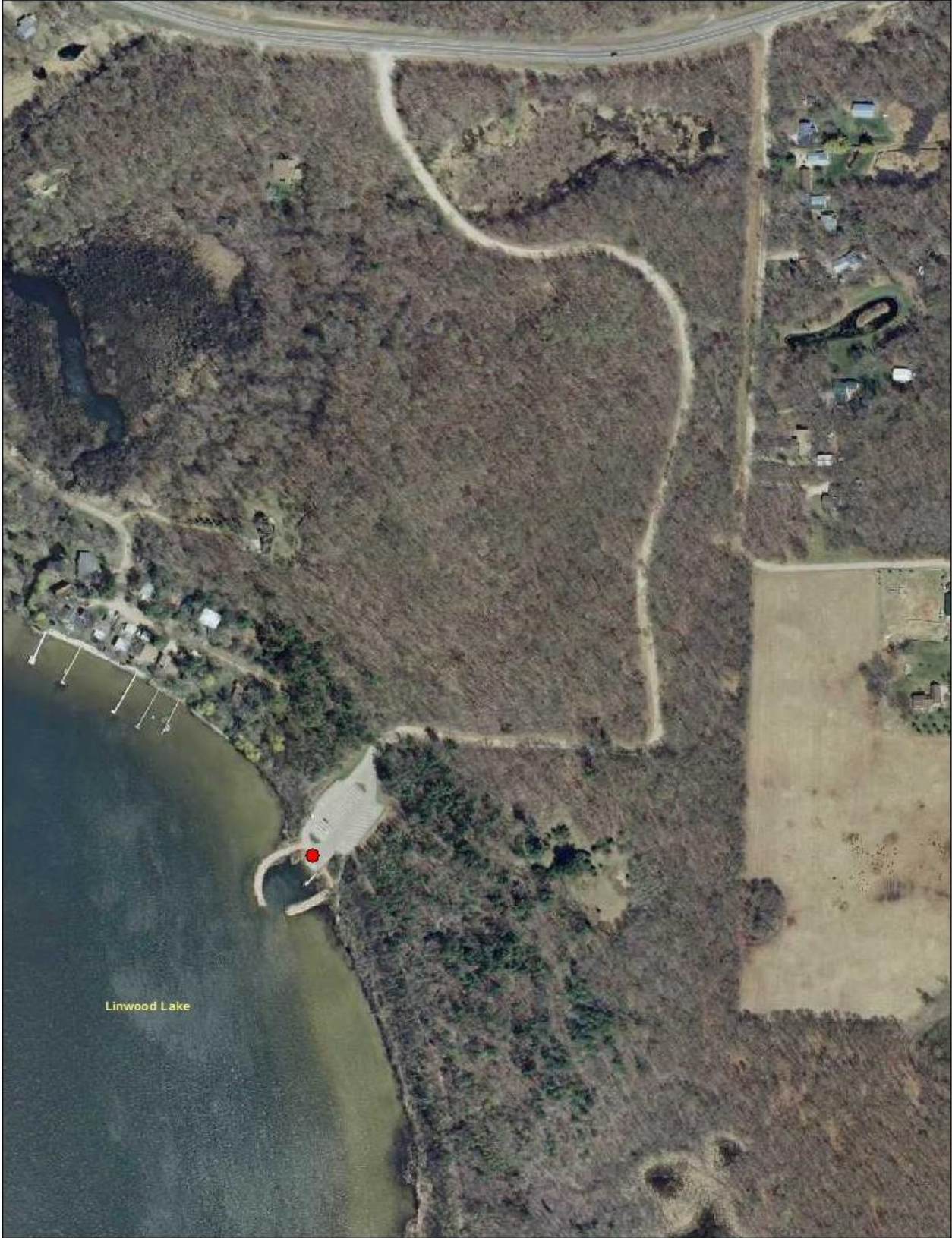


Unofficial Lot



6. Linwood Lake

Task:	Answer	Yes?	No?	Maybe?	Description
Location (City & Watershed org.)	Linwood Sunrise River WMO				
Owner/Operator	Anoka Co Parks				
Parking for trailers?		X			29
Parking for cars?		X			8
Disabled parking?		X			3
Ramp materials/condition	Concrete Plank				2 lanes, Good condition
Dock(s)?		X			1
Toilets?		X			1
Trash?		X			1
AIS signage		X			
Use level-low, med, high	High				
Presence of lake association or Lid?		X			



Parking Lot



Ramp



AIS Sign



AIS Signs

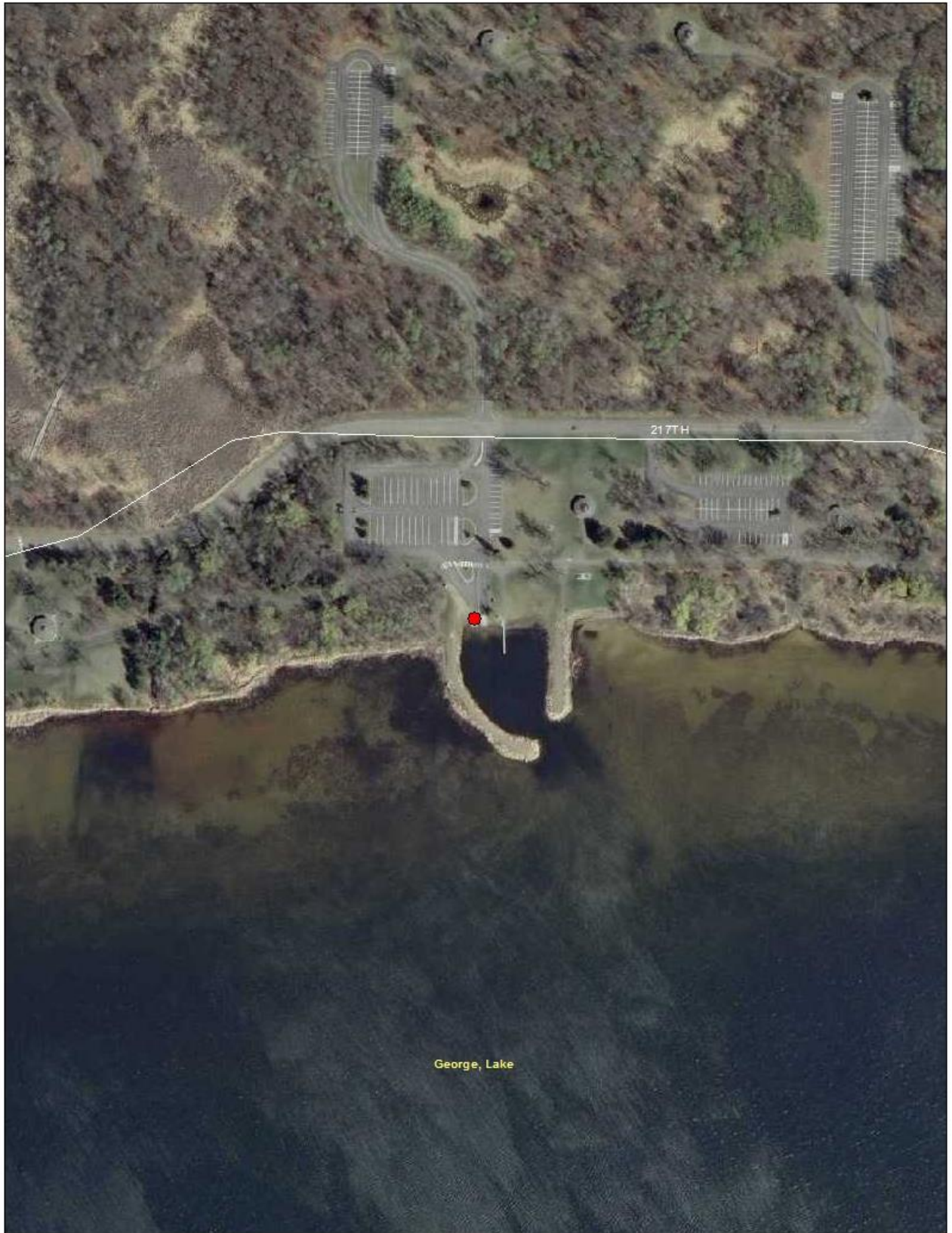


Bathroom/Trash



7. Lake George

Task:	Answer	Yes?	No?	Maybe?	Description
Location (City & Watershed org.)	Oak Grove Upper Rum River WMO				
Owner/Operator	Anoka Co Parks				
Parking for trailers?		X			28
Parking for cars?		X			11
Disabled parking?		X			4
Ramp materials/condition	Concrete Slab				2 Lanes Good Condition
Dock(s)?		X			1
Toilets?		X			1
Trash?		X			
AIS signage		X			
Use level-low, med, high	High				
Presence of lake association or Lid?		X			LID



Bathroom



AIS Sign



Trash



AIS Signs



Ramp



AIS Sign



Parking Lot



8. East Twin Lake

Task:	Answer	Yes?	No?	Maybe?	Description
Location (City & Watershed org.)	Nowthen Upper Rum River WMO				
Owner/Operator	City of Nowthen				
Parking for trailers?		X			15
Parking for cars?			X		Public uses trailer spots for cars
Disabled parking?			X		
Ramp materials/condition	Concrete Plank				Single Lane Good Condition
Dock(s)?		X			1
Toilets?			X		There are restrooms at beach in park
Trash?		X			
AIS signage			X		
Use level-low, med, high	Med				
Presence of lake association or Lid?			X		



Parking

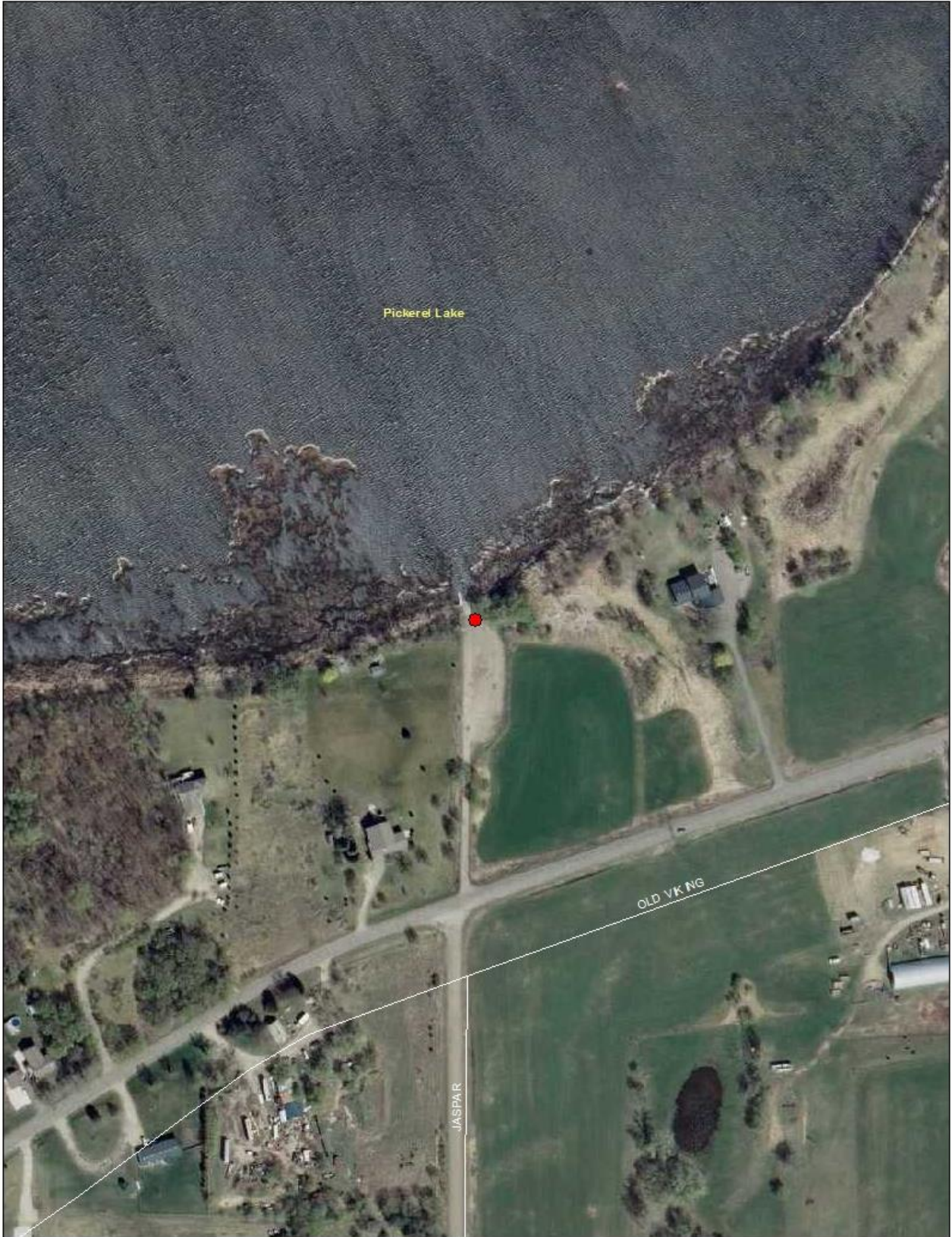


Launch



9. Lake Pickerel

Task:	Answer	Yes?	No?	Maybe?	Description
Location (City & Watershed org.)	Nowthen URRWMO				
Owner/Operator	DNR T&W				
Parking for trailers?		X			Dirt/gravel No lines
Parking for cars?		X			No Lines
Disabled parking?			X		
Ramp materials/condition	Concrete Plank				Moderate condition
Dock(s)?		X			
Toilets?			X		
Trash?			X		
AIS signage		X			
Use level-low, med, high	Low				Primarily used for hunting
Presence of lake association or Lid?			X		



Parking



AIS sign



Dock for winter



Launch



Signage

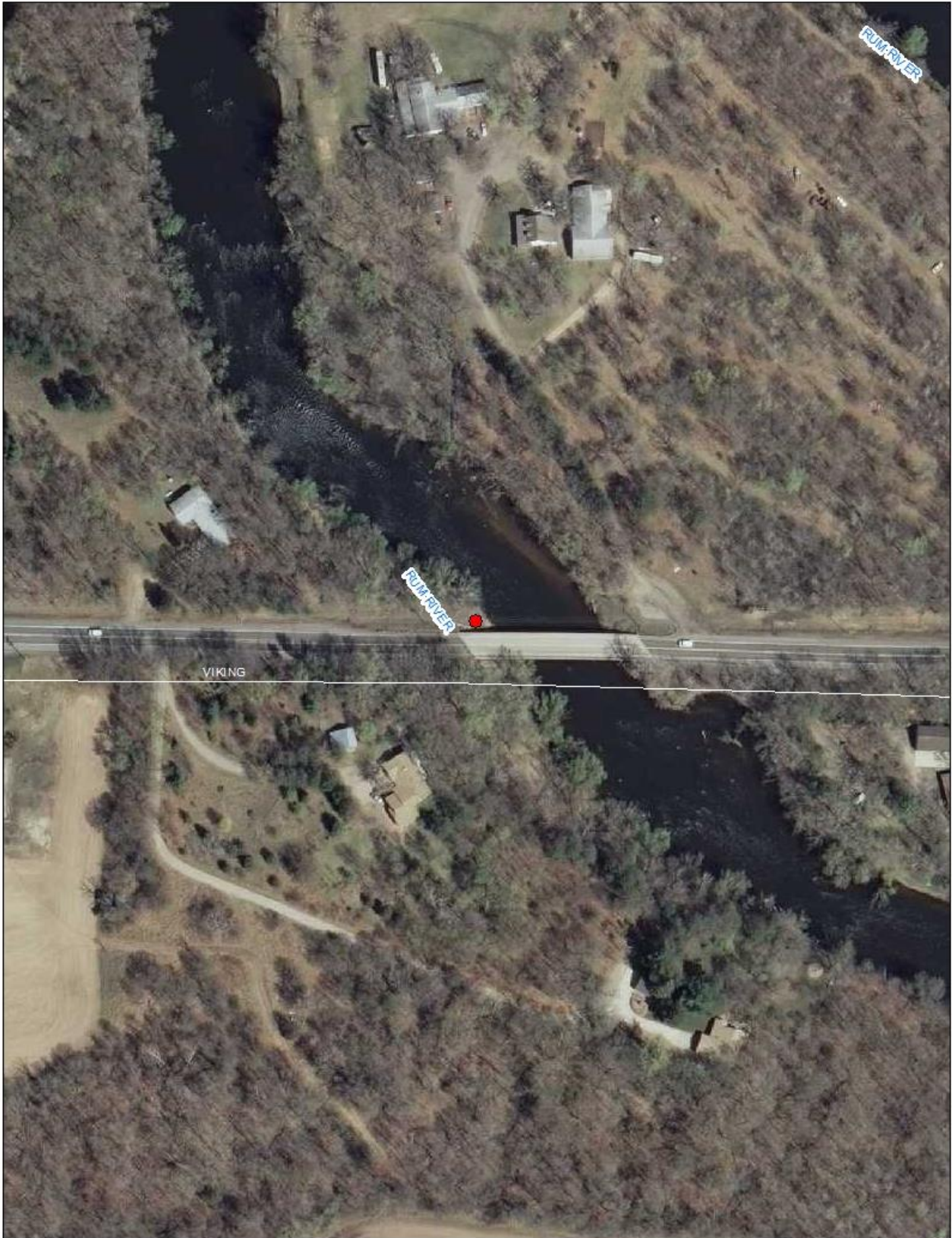


Access Rules
Keep launch area clear
The following activities are unlawful:
• Camping
• Shooting
• Building fires
• Consuming alcoholic beverages
Take Trash With You
Minnesota Department of Natural Resources

WATER ACCESS PROJECT
By your purchase of
Non-motor Fuel
Boat License
Fishing Equipment
Minnesota Department of Natural Resources

10. Rum River at Viking Boulevard

Task:	Answer	Yes?	No?	Maybe?	Description
Location (City & Watershed org.)	Oak Grove Upper Rum River WMO				
Owner/Operator	None				Public utilizes this intersection
Parking for trailers?			X		Unofficial Parking on street
Parking for cars?			X		Unofficial Parking on street
Disabled parking?			X		
Ramp materials/condition	Earth				Carry in only
Dock(s)?			X		
Toilets?			X		
Trash?			X		
AIS signage			X		
Use level-low, med, high	Med				
Presence of lake association or Lid?			X		



Trail to River

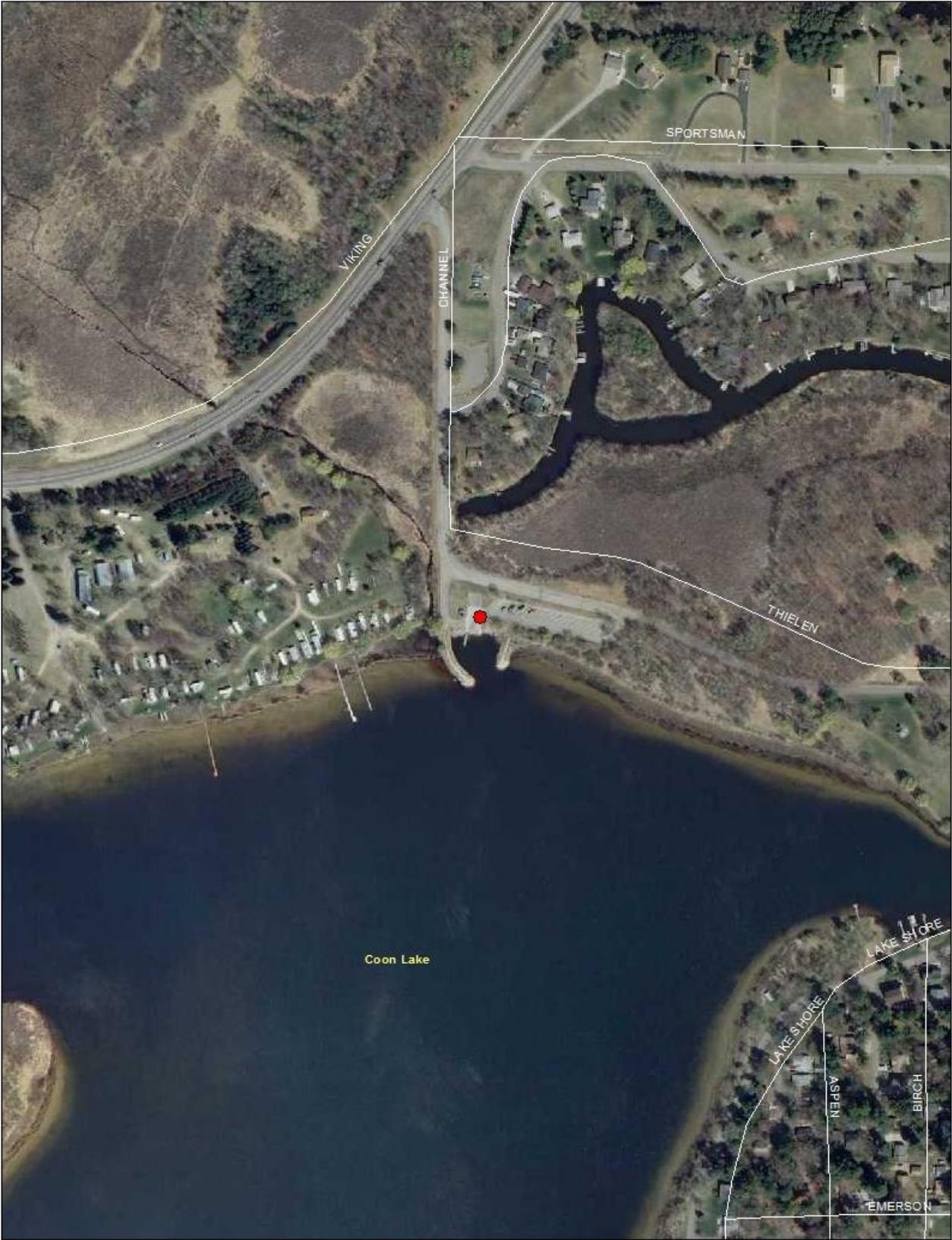


Road/street parking



11. Coon Lake - North

Task:	Answer	Yes?	No?	Maybe?	Description
Location (City & Watershed org.)	East Bethel Sunrise River WMO				
Owner/Operator	MN DNR				
Parking for trailers?		X			25
Parking for cars?			X		
Disabled parking?		X			2
Ramp materials/condition	Concrete Plank				2 Lanes Good condition
Dock(s)?		X			1
Toilets?		X			2
Trash?		X			
AIS signage		X			
Use level-low, med, high	High				
Presence of lake association or Lid?		X			LID



Bathrooms/Trash



AIS Signs



AIS Sign



Parking Lot



AIS Sign

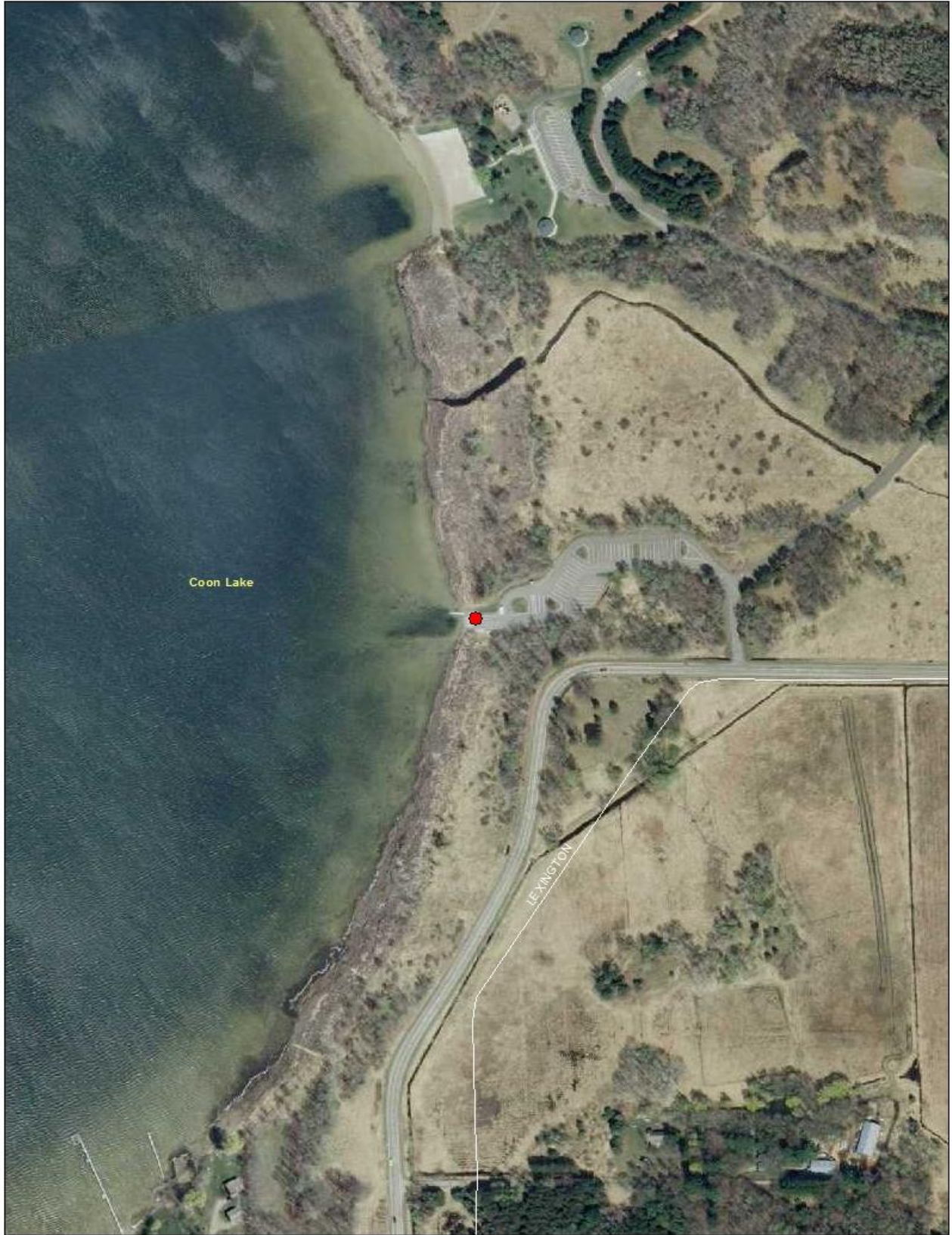


Ramp



12. Coon Lake - East

Task:	Answer	Yes?	No?	Maybe?	Description
Location (City & Watershed org.)	Columbus Sunrise River WMO				
Owner/Operator	Anoka Co Parks				
Parking for trailers?		X			44
Parking for cars?		X			0
Disabled parking?		X			1
Ramp materials/condition	Concrete Plank				2 Lanes Good Condition
Dock(s)?		X			1
Toilets?		X			1
Trash?		X			
AIS signage		X			
Use level-low, med, high	High				
Presence of lake association or LID?		X			LID



Trash/Recycling



Restrooms



AIS Signs



AIS Sign



Ramp

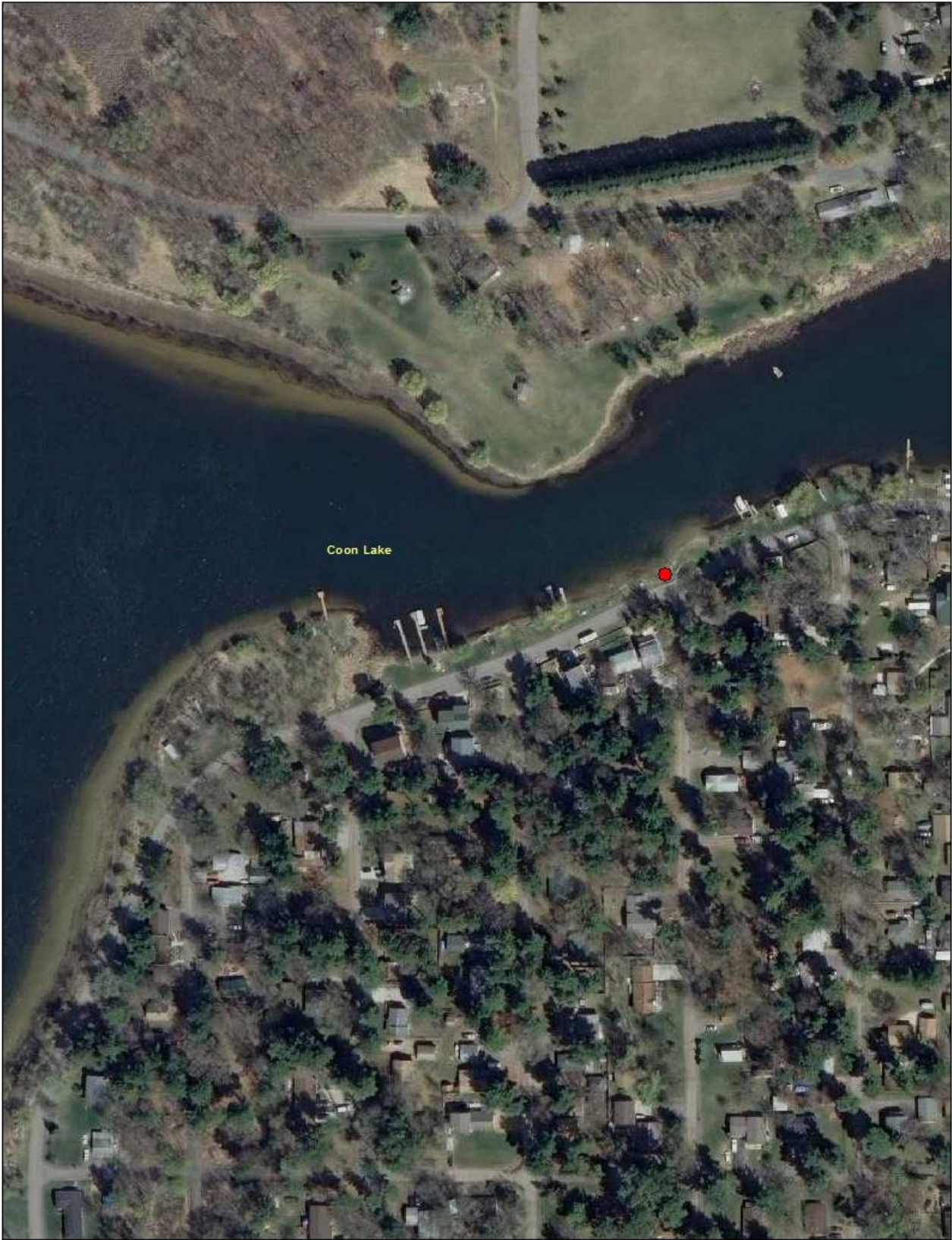


Ramp



13. Coon Lake - N Dogwood Rd/ Coon Lake - N Forest Rd

Task:	Answer	Yes?	No?	Maybe?	Description
Location (City & Watershed org.)	East Bethel Sunrise River WMO				
Owner/Operator	Coon Lake Beach Community				
Parking for trailers?			X		
Parking for cars?			X		
Disabled parking?			X		
Ramp materials/condition	Concrete Plank				Single Lane Very good condition, re-done in 2014
Dock(s)?			X		
Toilets?			X		
Trash?			X		
AIS signage		X			
Use level-low, med, high	Med				
Presence of lake association or Lid?		X			LID



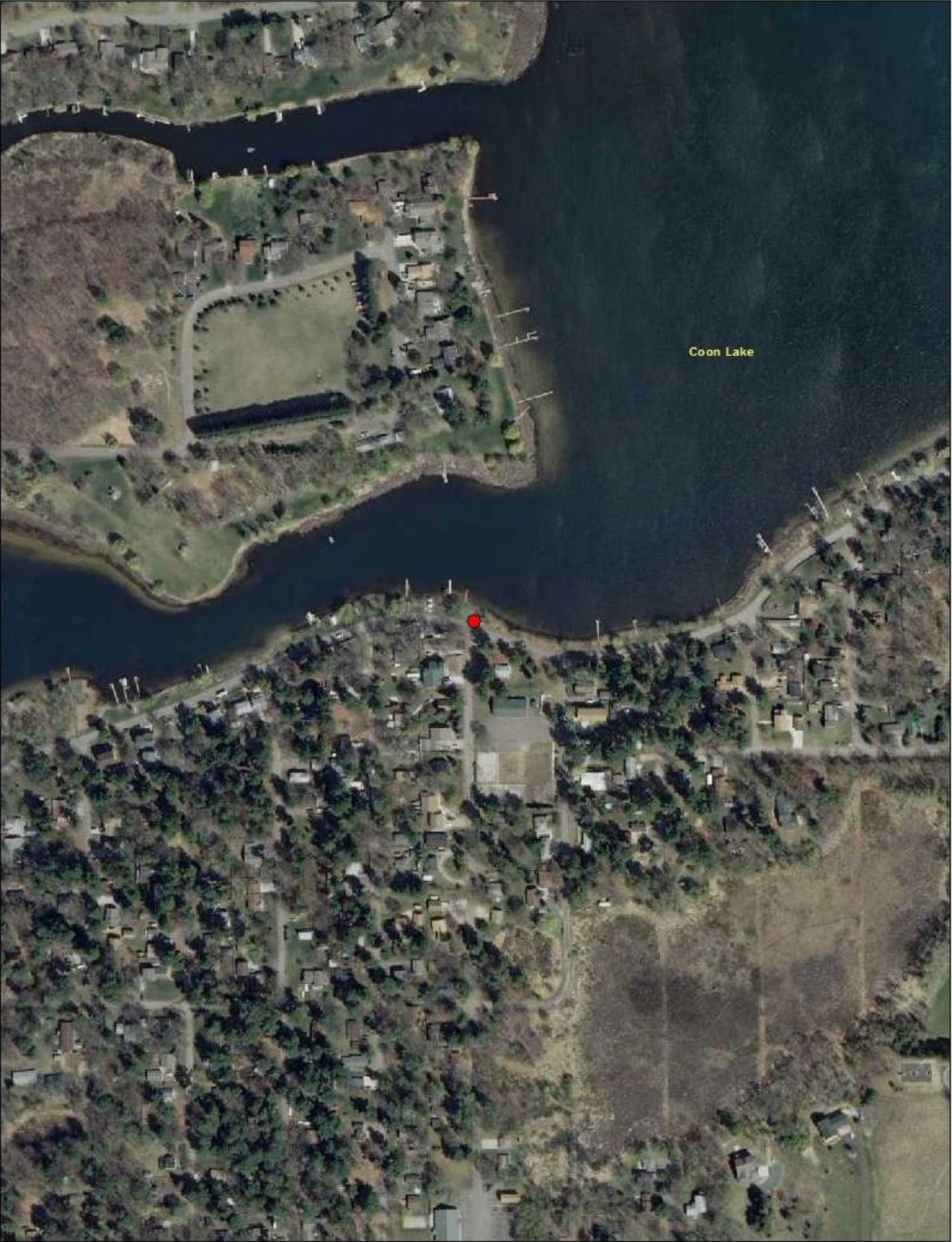
Launch & AIS sign



No parking on lake side



Task:	Answer	Yes?	No?	Maybe?	Description
Location (City & Watershed org.)	East Bethel Sunrise River WMO				
Owner/Operator	Coon Lake Beach Community				
Parking for trailers?			X		
Parking for cars?			X		
Disabled parking?			X		
Ramp materials/condition	Dirt lane off of road				Very eroded, Poor condition
Dock(s)?			X		
Toilets?			X		
Trash?			X		
AIS signage		X			
Use level-low, med, high	Low				
Presence of lake association or Lid?		X			LID



AIS Sign

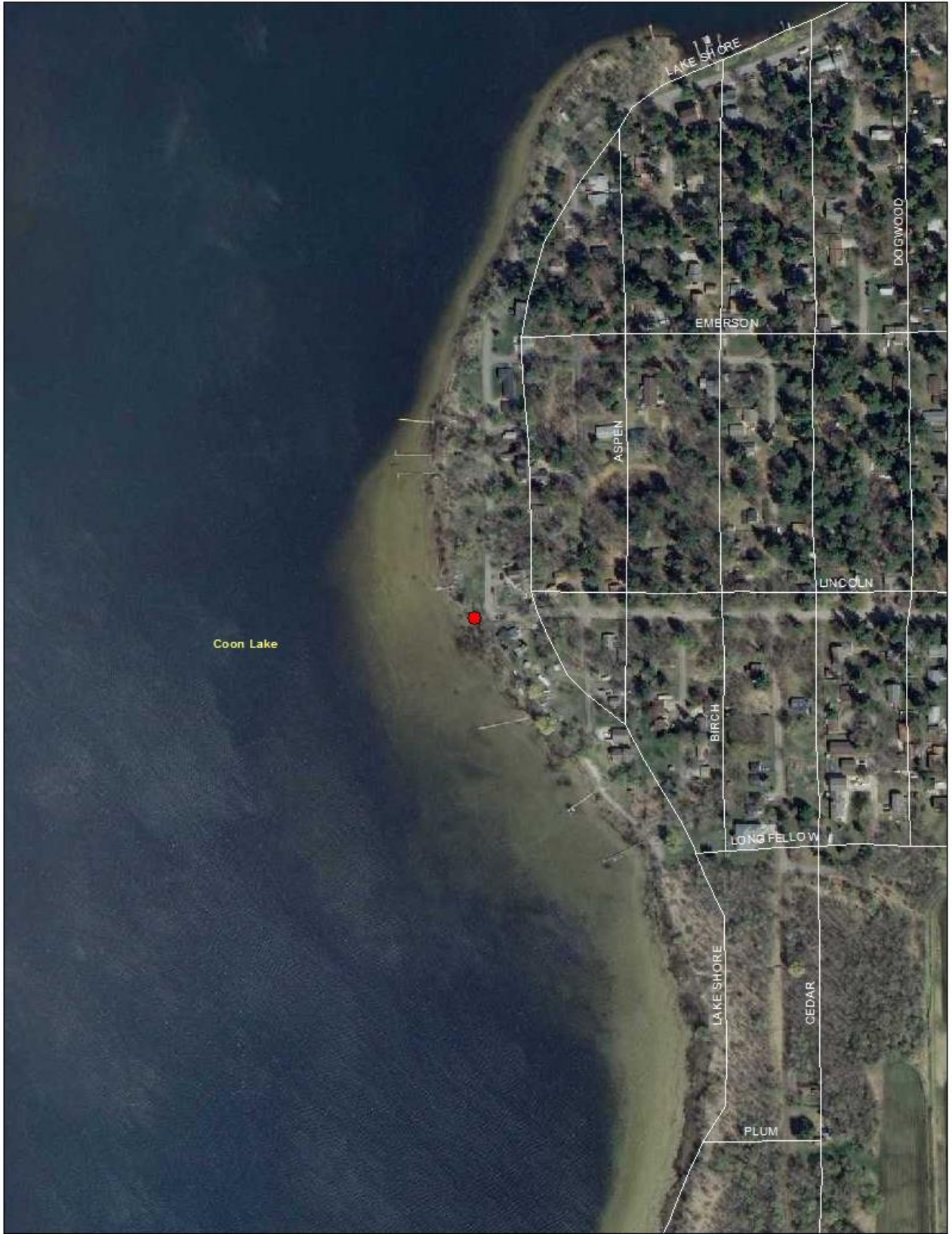


Ramp



14. Coon Lake Beach W Lincoln Dr.

Task:	Answer	Yes?	No?	Maybe?	Description
Location (City & Watershed org.)	East Bethel Sunrise River WMO				
Owner/Operator	Coon Lake Beach Community				
Parking for trailers?			X		
Parking for cars?			X		
Disabled parking?			X		
Ramp materials/condition	Dirt lane off of road				Eroded, Poor condition
Dock(s)?			X		
Toilets?			X		
Trash?			X		
AIS signage		X			
Use level-low, med, high	Low				
Presence of lake association or Lid?		X			LID



AIS Sign

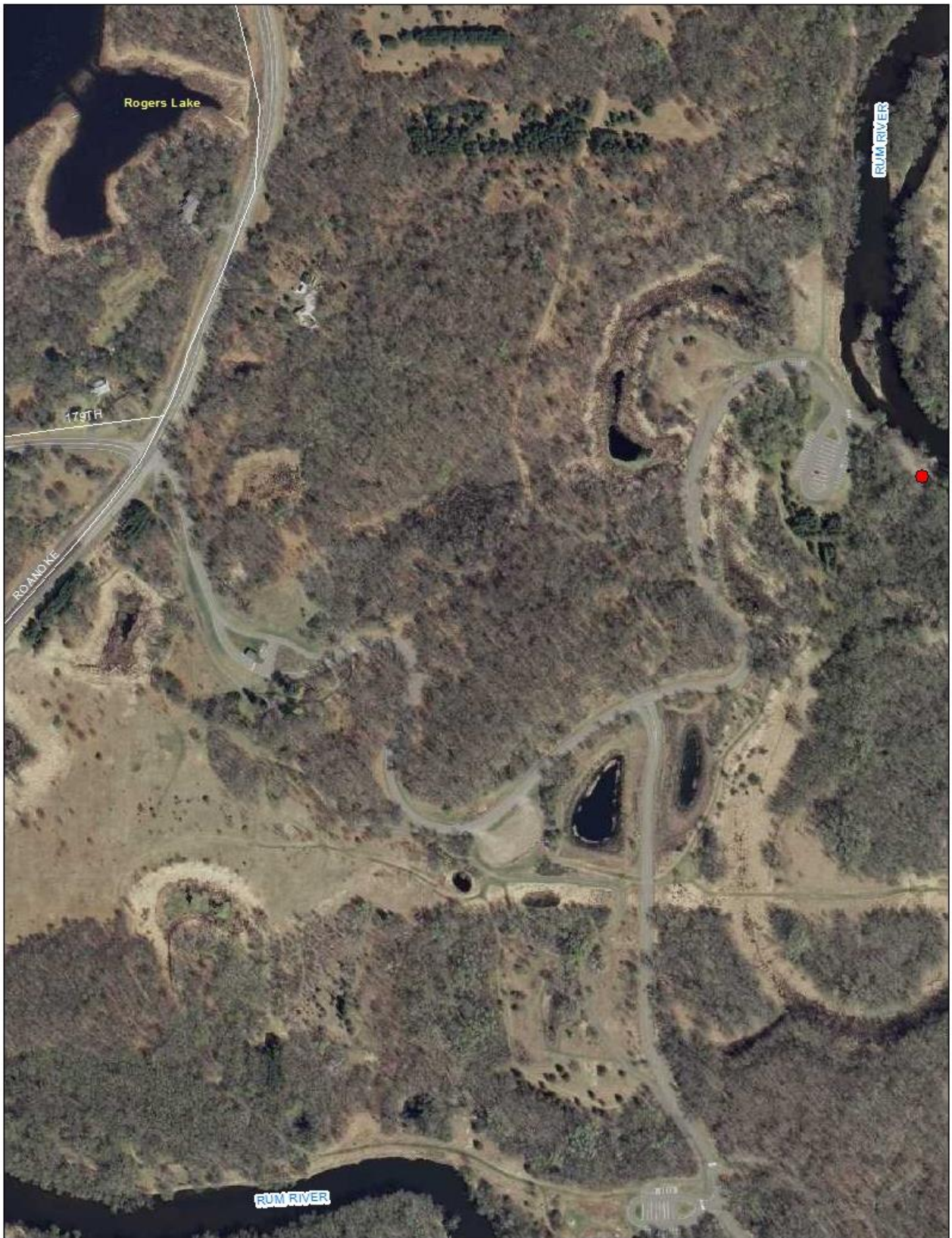


Ramp



15. Rum River Central Regional Park - North

Task:	Answer	Yes?	No?	Maybe?	Description
Location (City & Watershed org.)	Ramsey Lower Rum River WMO				
Owner/Operator	Anoka Co Parks				
Parking for trailers?		X			10
Parking for cars?		X			22
Disabled parking?		X			2
Ramp materials/condition	Plank				Moderate Condition
Dock(s)?			X		
Toilets?		X			2
Trash?			X		
AIS signage			X		
Use level-low, med, high	Med				
Presence of lake association or Lid?			X		



Launch



Parking

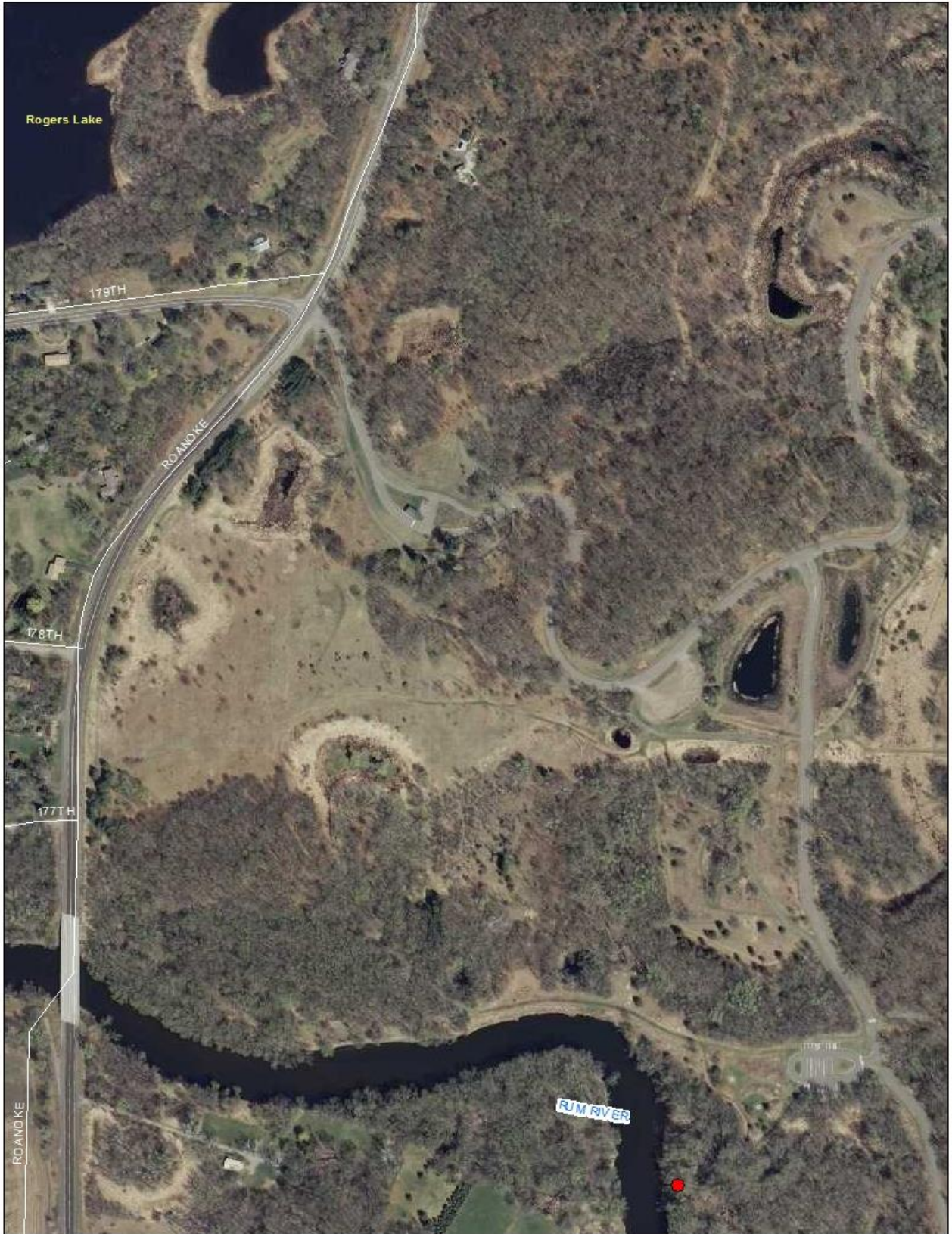


Signage



16. Rum Central Regional Park - South

Task:	Answer	Yes?	No?	Maybe?	Description
Location (City & Watershed org.)	Ramsey Lower Rum River MWO				
Owner/Operator	Anoka Co Parks				
Parking for trailers?		X			8
Parking for cars?		X			17
Disabled parking?		X			3
Ramp materials/condition	Earth				Carry in only
Dock(s)?			X		
Toilets?			X		Toilets and trash in other areas of park
Trash?			X		
AIS signage		X			
Use level-low, med, high	Med				
Presence of lake association or Lid?			X		



Parking



AIS signage



Trail to river



Trail entrance from parking



Parking from other side



17. Lake Netta

Task:	Answer	Yes?	No?	Maybe?	Description
Location (City & Watershed org.)	Ham Lake Coon Creek WD				
Owner/Operator	City of Ham Lake				
Parking for trailers?		X			No formal spots, but space available
Parking for cars?		X			No formal spots, but space available
Disabled parking?			X		
Ramp materials/condition	Earth Ramp				Very eroded, Poor condition
Dock(s)?			X		
Toilets?			X		
Trash?		X			
AIS signage			X		
Use level-low, med, high	Low				
Presence of lake association or Lid?			X		



Ramp

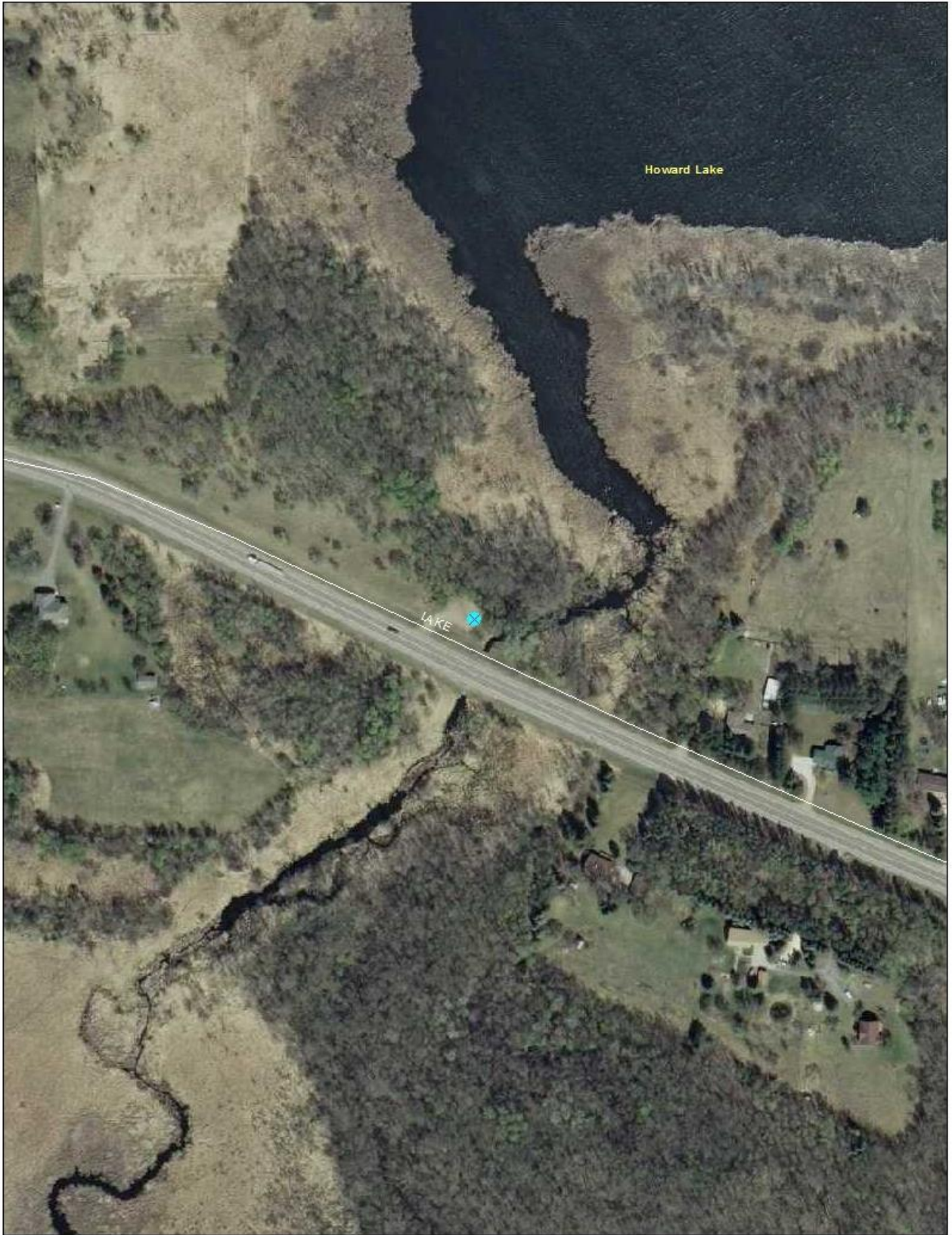


Unofficial Parking Lot



18. Howard Lake

Task:	Answer	Yes?	No?	Maybe?	Description
Location (City & Watershed org.)	Columbus Rice Creek WD				
Owner/Operator	DNR T&W				
Parking for trailers?			X		A trailer could fit but no designated spots
Parking for cars?		X			No designated spots
Disabled parking?		X			2
Ramp materials/condition	dirt/grass launch				Carry in only
Dock(s)?		X			Badly damaged
Toilets?			X		
Trash?			X		
AIS signage			X		
Use level-low, med, high	Low				For hunting
Presence of lake association or Lid?			X		



Entrance from road + park signs



More park signs



Parking area



Disabled parking signs



Canoe entrance + signs



Canoe launch



Close-up of park sign



19. Ham Lake

Task:	Answer	Yes?	No?	Maybe?	Description
Location (City & Watershed org.)	Ham Lake Coon Creek WD				
Owner/Operator	City of Ham Lake				
Parking for trailers?		X			14
Parking for cars?		X			13
Disabled parking?			X		
Ramp materials/condition	Concrete Plank				Single Lane Good condition
Dock(s)?		X			1
Toilets?		X			1
Trash?		X			
AIS signage		X			
Use level-low, med, high	Med				
Presence of lake association or Lid?		X			Lake Association



AIS Sign



Bathroom/Trash



Ramp



AIS Sign



AIS Sign



Parking Lot



20. Mississippi River - Highway 10 Rest-stop

Task:	Answer	Yes?	No?	Maybe?	Description
Location (City & Watershed org.)	Ramsey Lower Rum River WMO				
Owner/Operator	DNR T&W Region Office 6B				
Parking for trailers?			X		
Parking for cars?		X			30
Disabled parking?			X		
Ramp materials/condition	Earth				Carry in Only
Dock(s)?			X		
Toilets?		X			
Trash?		X			
AIS signage		X			
Use level-low, med, high	Low				
Presence of lake association or LID?			X		



Entrance



Path to river



Parking

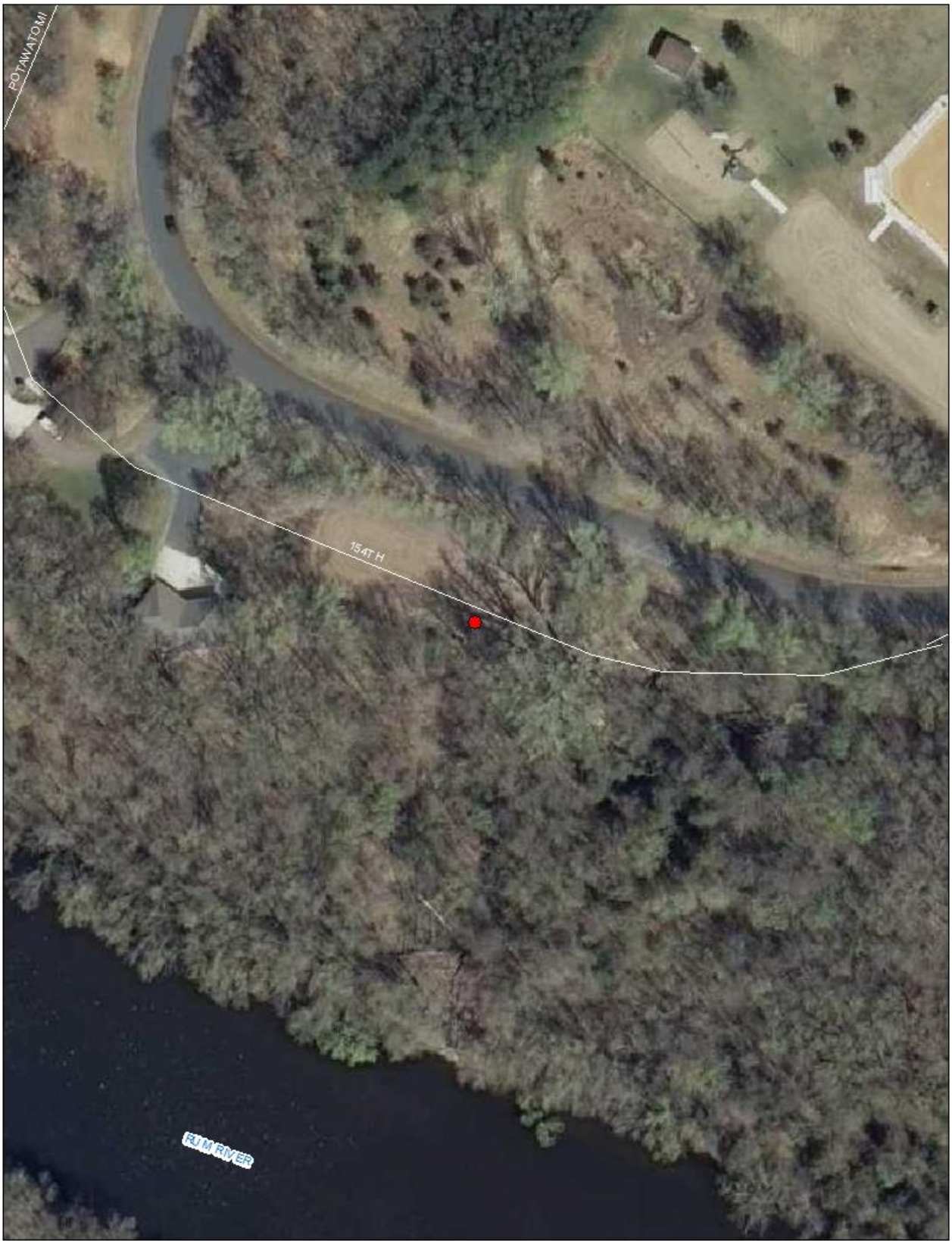


AIS signs



21. Rum River - Strootman Park

Task:	Answer	Yes?	No?	Maybe?	Description
Location (City & Watershed org.)	Andover Lower Rum River WMO				
Owner/Operator	DNR T&W Region Office 6B				
Parking for trailers?		X			No formal parking. no lined out spots
Parking for cars?		X			No formal parking. no lined out spots
Disabled parking?			X		
Ramp materials/condition	Wooden launch pad				Moderate Condition
Dock(s)?			X		
Toilets?			X		
Trash?		X			
AIS signage			X		
Use level-low, med, high	Low				
Presence of lake association or Lid?			X		



Wooden launch pad



Trail entrance

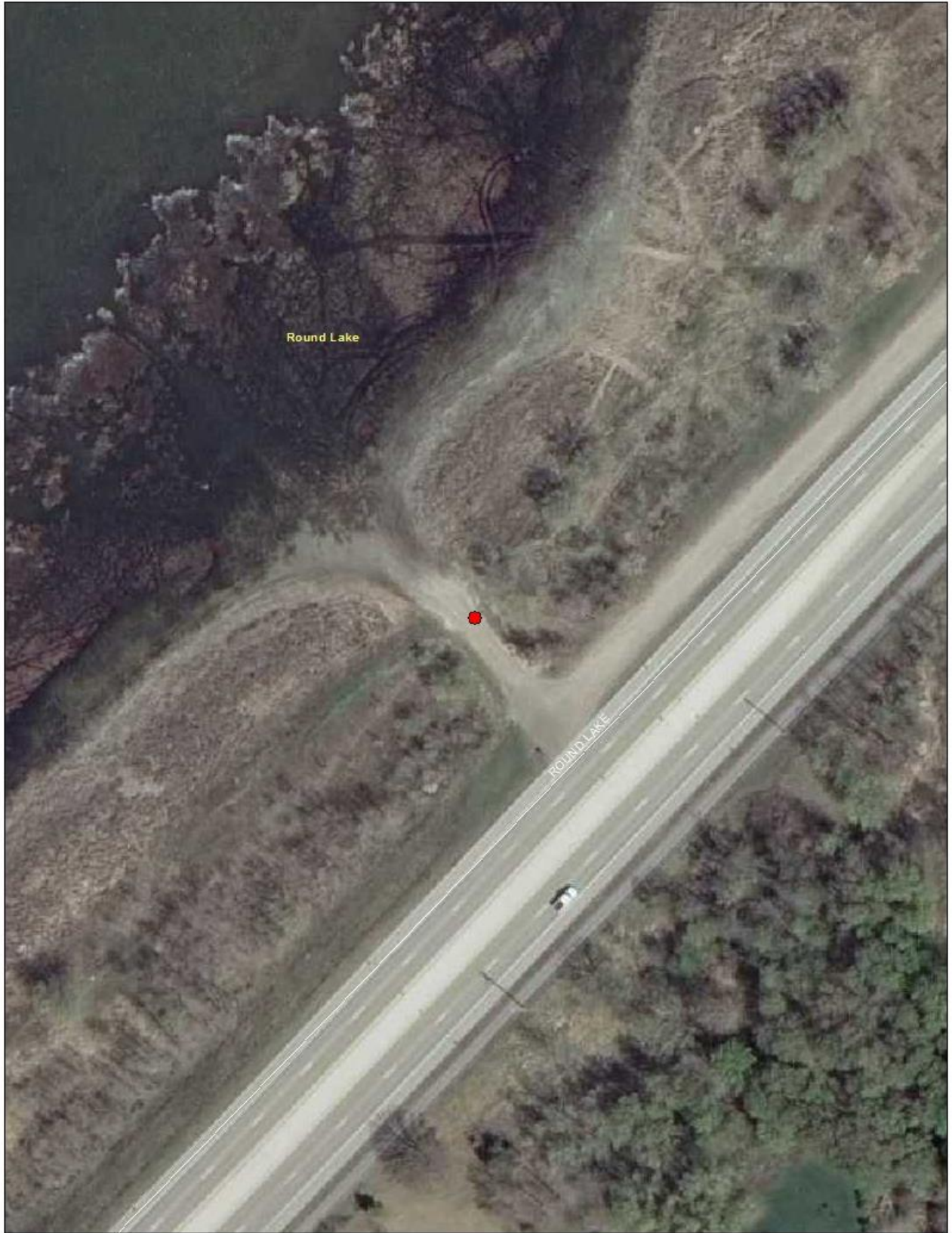


Trail entrance



22. Round Lake

Task:	Answer	Yes?	No?	Maybe?	Description
Location (City & Watershed org.)	Andover Lower Rum River WMO				
Owner/Operator	Anoka Co Parks				
Parking for trailers?		X			No formal or lined spots
Parking for cars?		X			No formal or lined spots
Disabled parking?			X		
Ramp materials/condition	Earth				Very poor condition, heavily rutted
Dock(s)?			X		
Toilets?			X		
Trash?			X		
AIS signage			X		
Use level-low, med, high	Low				For canoes or small boats
Presence of lake association or Lid?			X		



Road Entrance



Ramp



Frontage Road/Parking & No Hunting Sign



23. Mississippi River - Mississippi West Regional Park

Task:	Answer	Yes?	No?	Maybe?	Description
Location (City & Watershed org.)	Ramsey Lower Rum River WMO				
Owner/Operator	Anoka Co Parks				
Parking for trailers?		X			8
Parking for cars?		X			6
Disabled parking?		X			1
Ramp materials/condition	Concrete Slab				Single Lane Great Condition Recently Renovated
Dock(s)?			X		
Toilets?		X			
Trash?		X			
AIS signage		X			
Use level-low, med, high	Med				Likely only used by lakeshore homeowners and guests
Presence of lake association or Lid?			X		



Parking



AIS sign



Ramp



Disabled parking



Signage



Toilet and Trash



Ramp zoomed out



Blocked off road to old launch



24. Rum River - Anoka High School

Task:	Answer	Yes?	No?	Maybe?	Description
Location (City & Watershed org.)	Anoka Lower Rum River WMO				
Owner/Operator	Anoka High School				
Parking for trailers?			X		Some parking over by high school
Parking for cars?			X		Some parking over by high school
Disabled parking?			X		
Ramp materials/condition	Earth & wooden steps down to river				Carry in only Moderate Condition
Dock(s)?			X		
Toilets?			X		
Trash?			X		
AIS signage			X		
Use level-low, med, high	Med				
Presence of lake association or Lid?			X		



Steps down to river



Paved trail next to steps

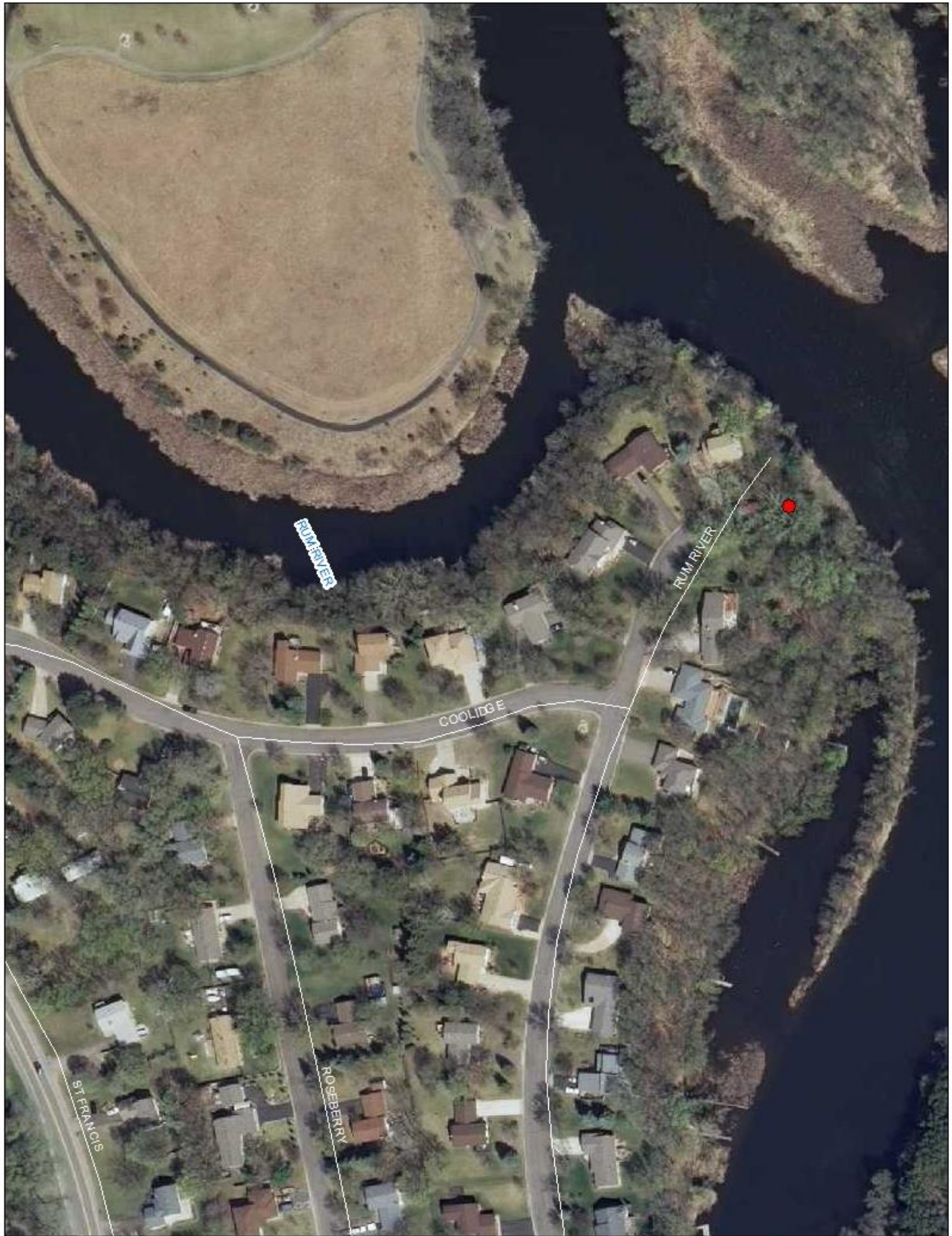


Steps again



25. Rum River - Coolidge, Brom Canoe Rest Stop

Task:	Answer	Yes?	No?	Maybe?	Description
Location (City & Watershed org.)	Anoka Lower Rum River WMO				
Owner/Operator	City of Anoka				
Parking for trailers?			X		Informal street and dead end parking
Parking for cars?			X		Informal street and dead end parking
Disabled parking?			X		
Ramp materials/condition	Small wooden pier built- in/natural ramp				Carry in only Moderate Condition
Dock(s)?			X		
Toilets?			X		
Trash?			X		
AIS signage			X		
Use level-low, med, high	Low				
Presence of lake association or Lid?			X		



Dead End/Parking



Park area



Steps to Carry-In Site



Park/Canoe Carry-in Site



26. Rum River – Rum River South County Park

Task:	Answer	Yes?	No?	Maybe?	Description
Location (City & Watershed org.)	Anoka Lower Rum River WMO				
Owner/Operator	Anoka Co Parks				
Parking for trailers?		X			9
Parking for cars?		X			48
Disabled parking?		X			1
Ramp materials/condition	Concrete Plank				2 Lanes Good Condition
Dock(s)?			X		
Toilets?		X			1
Trash?		X			
AIS signage		X			
Use level-low, med, high	High				
Presence of lake association or Lid?			X		



Parking



Car Parking in Other Lot



Signage



Ramp



Ramp Entrance

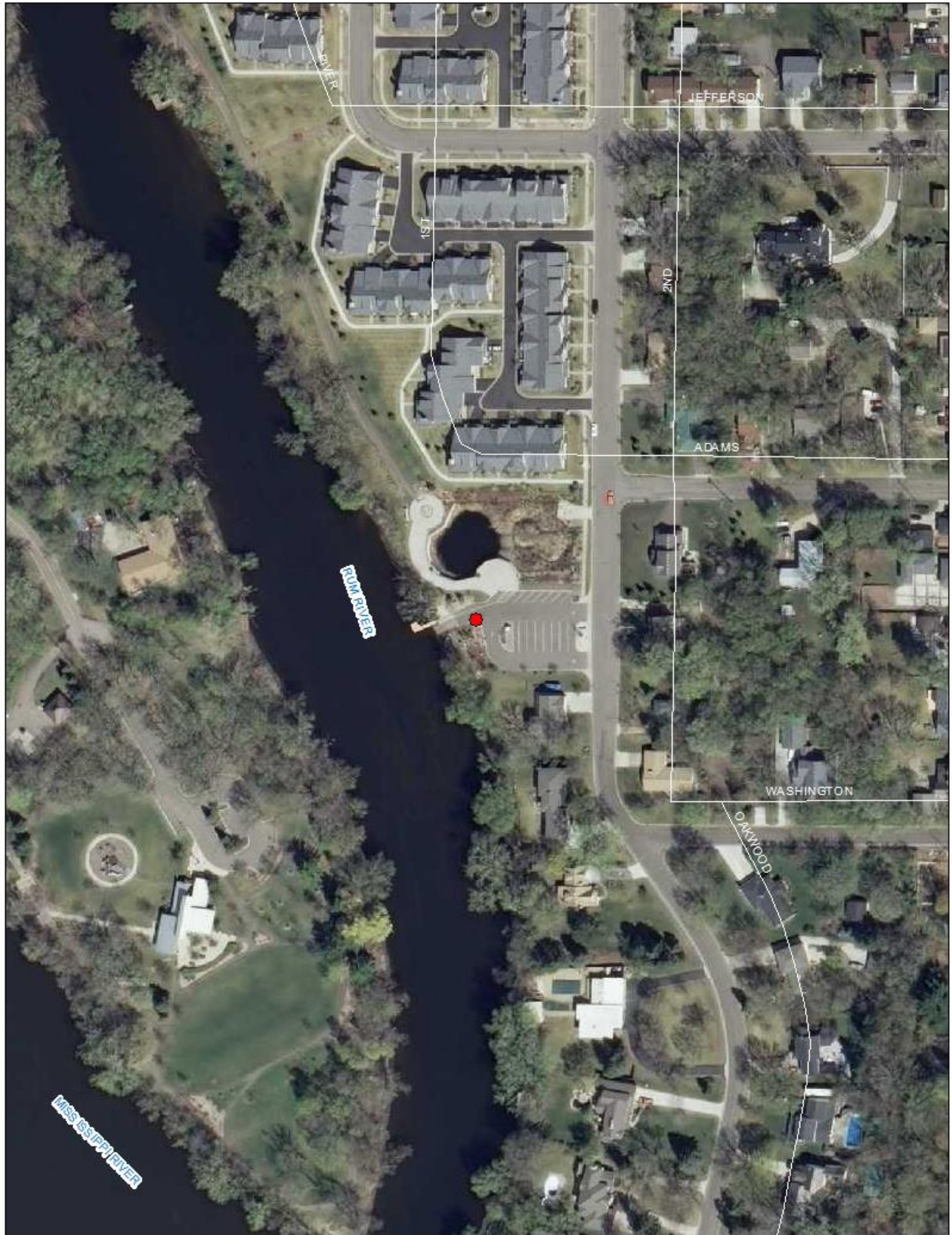


Toilets & Trash



27. Rum River - Akin Riverside Park

Task:	Answer	Yes?	No?	Maybe?	Description
Location (City & Watershed org.)	Anoka Lower Rum River WMO				
Owner/Operator	City of Anoka				
Parking for trailers?		X			8
Parking for cars?		X			7
Disabled parking?			X		
Ramp materials/condition	Concrete Plank				Single Lane Good Condition
Dock(s)?		X			1 dock Slips also located here
Toilets?		X			1
Trash?		X			
AIS signage			X		
Use level-low, med, high	High				
Presence of lake association or Lid?			X		



Parking and Dock Storage



Trailer Parking only sign



Signage



Ramp



Signage

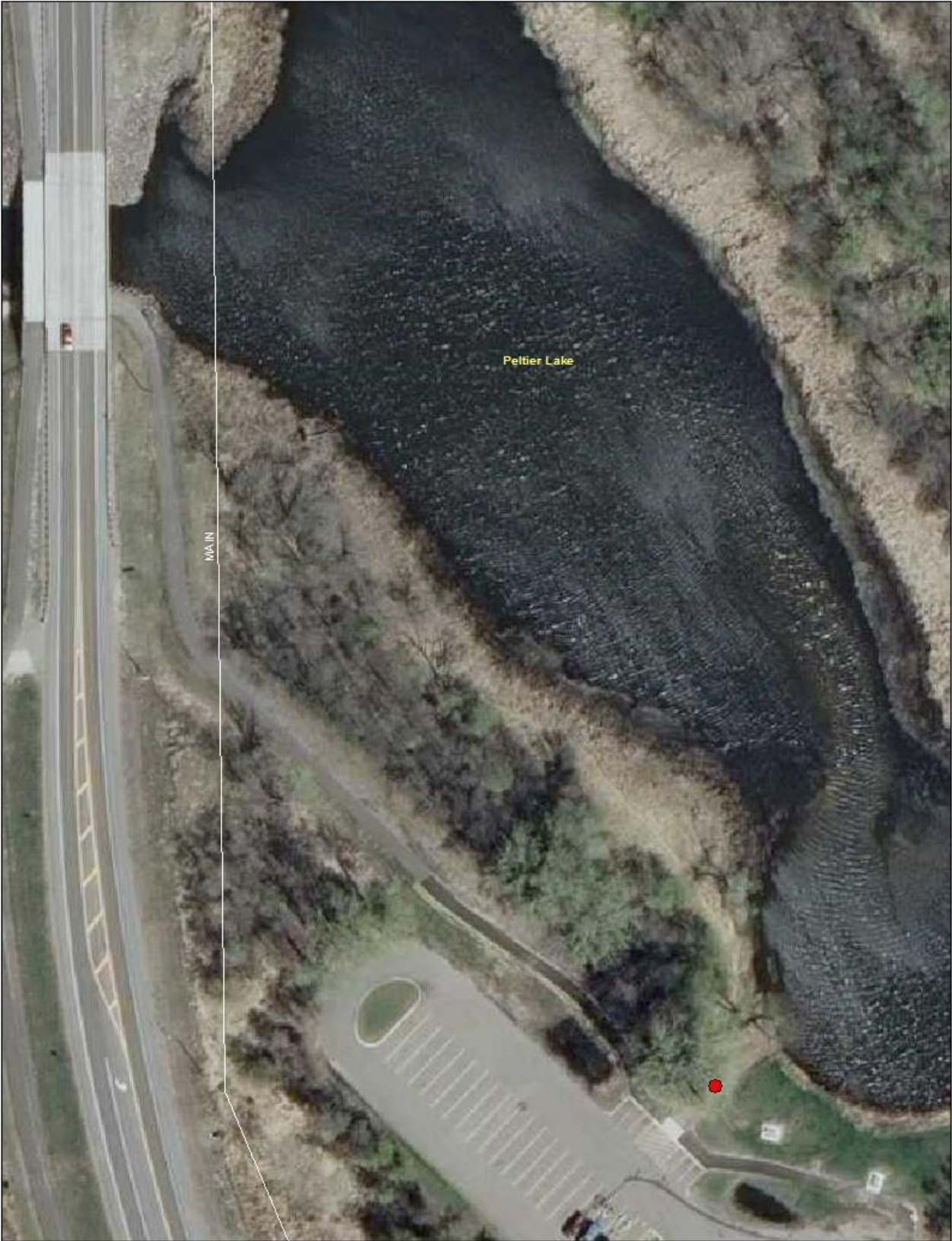


Signage



28. Peltier Lake – Canoe Launch

Task:	Answer	Yes?	No?	Maybe?	Description
Location (City & Watershed org.)	Lino Lakes Rice Creek WD				
Owner/Operator	Anoka Co Parks				
Parking for trailers?		X			Shares parking lot with Trailer Launch
Parking for cars?		X			5
Disabled parking?		X			1
Ramp materials/condition	Earth				Carry in Only
Dock(s)?			X		Not at this launch
Toilets?		X			
Trash?		X			
AIS signage		X			Not at creek access, but at other access
Use level-low, med, high	Med				
Presence of lake association or Lid?				X	



AIS and other signage



Creek canoe access

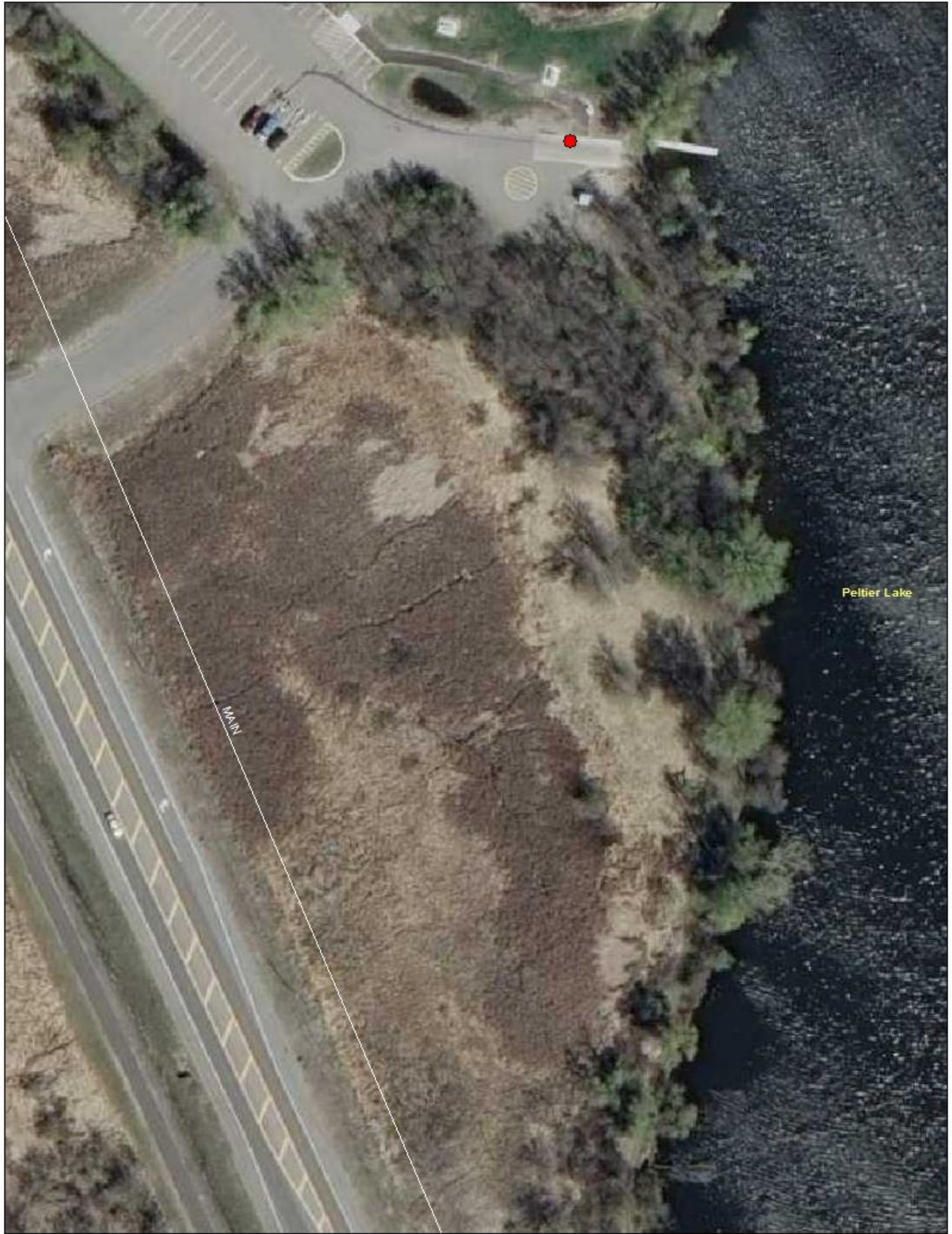


Whole Park



29. Peltier Lake - Trailer Launch

Task:	Answer	Yes?	No?	Maybe?	Description
Location (City & Watershed org.)	Lino Lakes Rice Creek WD				
Owner/Operator	Anoka Co Parks				
Parking for trailers?		X			20
Parking for cars?		X			
Disabled parking?		X			1
Ramp materials/condition	Concrete Plank				Single Lane Good Condition
Dock(s)?		X			1
Toilets?		X			1
Trash?		X			
AIS signage		X			
Use level-low, med, high	High				
Presence of lake association or Lid?				X	



Parking



AIS and other signage



More signage



Whole Park



30. Centerville - North

Task:	Answer	Yes?	No?	Maybe?	Description
Location (City & Watershed org.)	Centerville Rice Creek WD				Waterworks Beach Club. Launch still open and accessible for a fee
Owner/Operator	Waterworks Beach Club				
Parking for trailers?				X	Can park in open space, Not lined out
Parking for cars?		X			
Disabled parking?			X		
Ramp materials/condition	Gravel/dirt				Snow cover
Dock(s)?			X		
Toilets?			X		
Trash?			X		
AIS signage			X		
Use level-low, med, high	Low				
Presence of lake association or Lid?			X		



Parking and Launch



31. Centerville - West

Task:	Answer	Yes?	No?	Maybe?	Description
Location (City & Watershed org.)	Lino Lakes Rice Creek WD				
Owner/Operator	Anoka Co Parks				
Parking for trailers?		X			28
Parking for cars?		X			8
Disabled parking?		X			2
Ramp materials/condition	Concrete Plank				2 Lanes Good Condition
Dock(s)?		X			2
Toilets?		X			1
Trash?		X			
AIS signage		X			
Use level-low, med, high	High				
Presence of lake association or Lid?		X			



Entrance



Parking Lot



AIS signs



Launch close-up



Exit AIS sign



32. Reshanau Lake - Private Residential

Task:	Answer	Yes?	No?	Maybe?	Description
Location (City & Watershed org.)	Lino Lakes Rice Creek WD				
Owner/Operator	Unknown				Believe private launch for lakeshore homeowners only
Parking for trailers?			X		
Parking for cars?			X		
Disabled parking?			X		
Ramp materials/condition	Concrete Slab				Single Lane Moderate Condition
Dock(s)?		X			1
Toilets?			X		
Trash?			X		
AIS signage			X		
Use level-low, med, high	low				Just for nearby residents
Presence of lake association or Lid?			X		



Launch/possible parking



Neighboring park



33. Rice Lake - Rice Creek Entrance

Task:	Answer	Yes?	No?	Maybe?	Description
Location (City & Watershed org.)	Lino Lakes Rice Creek WD				
Owner/Operator	DNR T&W Region Office 6B				
Parking for trailers?			X		
Parking for cars?		X			Parking short ways down road
Disabled parking?			X		
Ramp materials/condition	Earth/Wooden steps				Carry In only
Dock(s)?			X		
Toilets?			X		
Trash?			X		
AIS signage			X		
Use level-low, med, high	Med				Carry in only
Presence of lake association or Lid?			X		

Creek entrance from opposite side

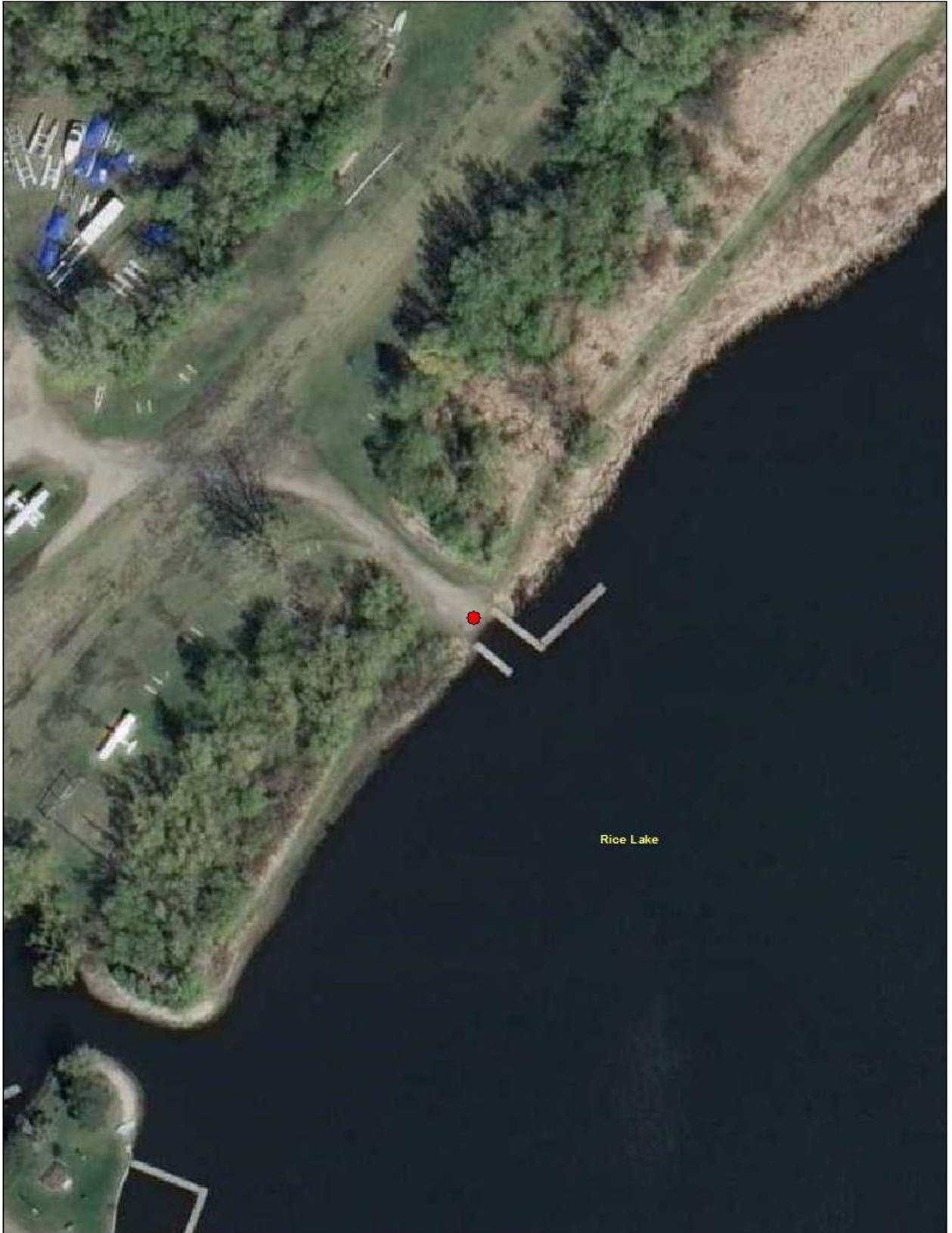


Creek Signage



34. Rice Lake - Surfside Seaplane Base

Task:	Answer	Yes?	No?	Maybe?	Notes
Location (City & Watershed org.)	Lino Lakes Rice Creek WD				
Owner/Operator	Surfside Seaplane Base				
Parking for trailers?			X		
Parking for cars?			X		Parking available down shoreline
Disabled parking?			X		
Ramp materials/condition	Earth				Single Lane Moderate Condition
Dock(s)?		X			2
Toilets?		X			
Trash?			X		
AIS signage		X			
Use level-low, med, high	Med				
Presence of lake association or Lid?				X	



Launch

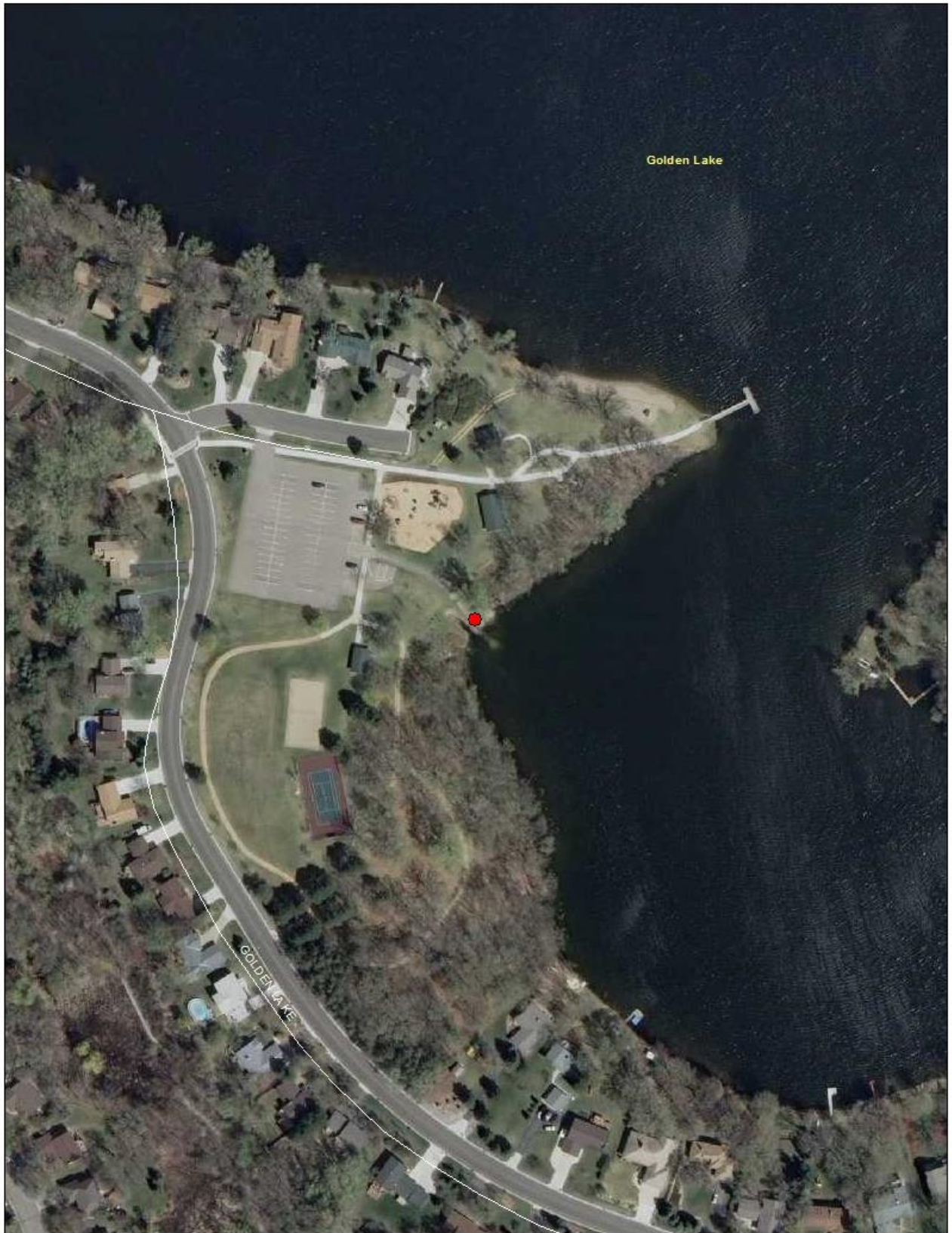


AIS Signage



35. Golden Lake

Task:	Answer	Yes?	No?	Maybe?	Description
Location (City & Watershed org.)	Circle Pines Rice Creek WD				
Owner/Operator	City of Circle Pines				
Parking for trailers?			X		Enough room for trailers but no designated spots
Parking for cars?		X			78
Disabled parking?		X			3
Ramp materials/condition	Concrete Plank				Single Lane Moderate Condition
Dock(s)?			X		
Toilets?		X			
Trash?		X			
AIS signage		X			
Use level-low, med, high	Low				
Presence of lake association or Lid?				X	



AIS SIGNAGE



Boat Launch

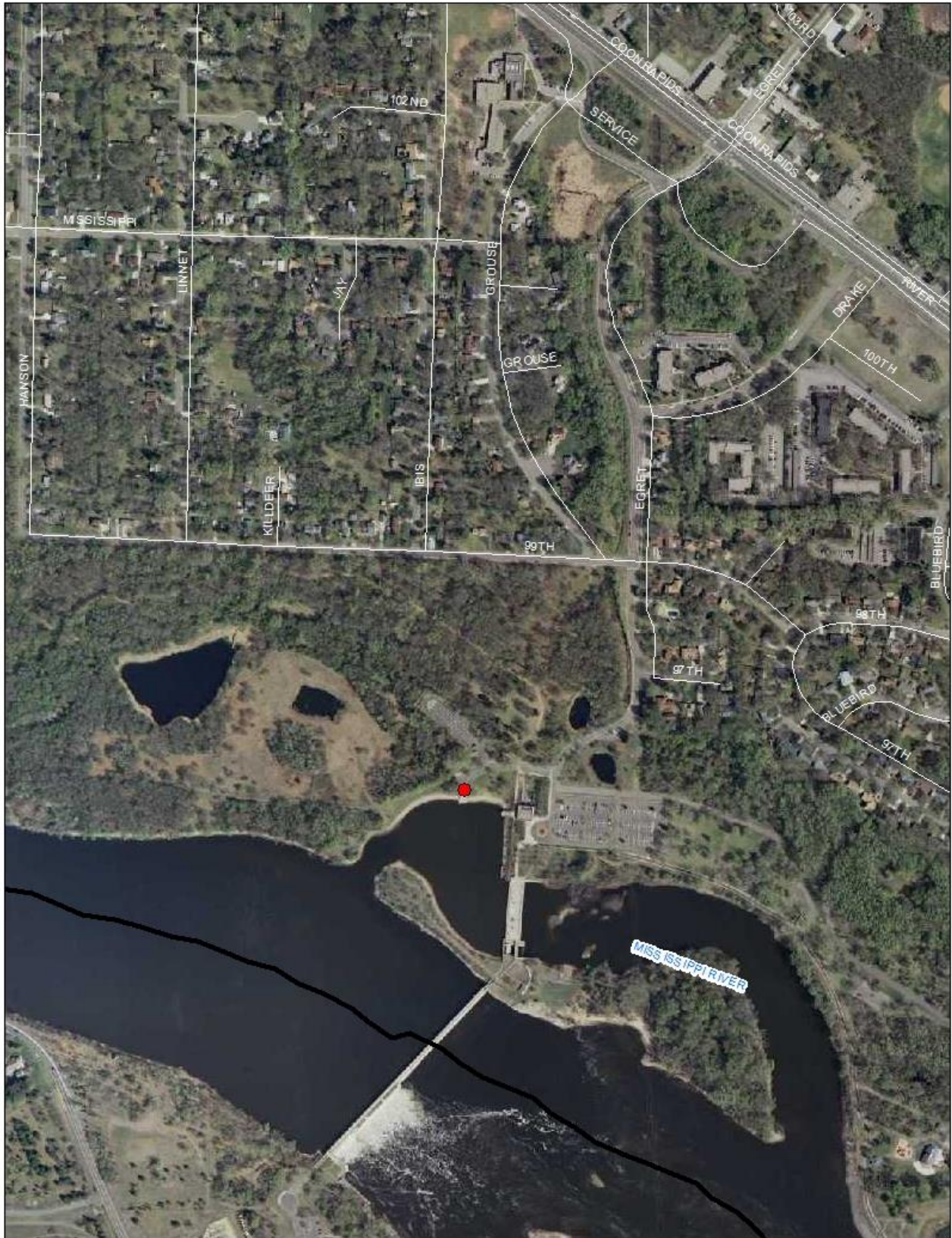


Whole Park



36. Mississippi River - Coon Rapids Dam Regional Park

Task:	Answer	Yes?	No?	Maybe?	Description
Location (City & Watershed org.)	Coon Rapids Coon Creek WD				
Owner/Operator	Anoka Co Parks				
Parking for trailers?		X			22
Parking for cars?			X		Parking nearby at visitor center
Disabled parking?		X			1
Ramp materials/condition	Concrete Plank				2 Lanes Good Condition
Dock(s)?		X			
Toilets?			X		Not at launch available at visitor center and along park paths
Trash?		X			Including a dumpster near launch
AIS signage		X			
Use level-low, med, high	High				
Presence of lake association or Lid?			X		



Ramp and AIS Signage



Parking Lot Trailer Sign

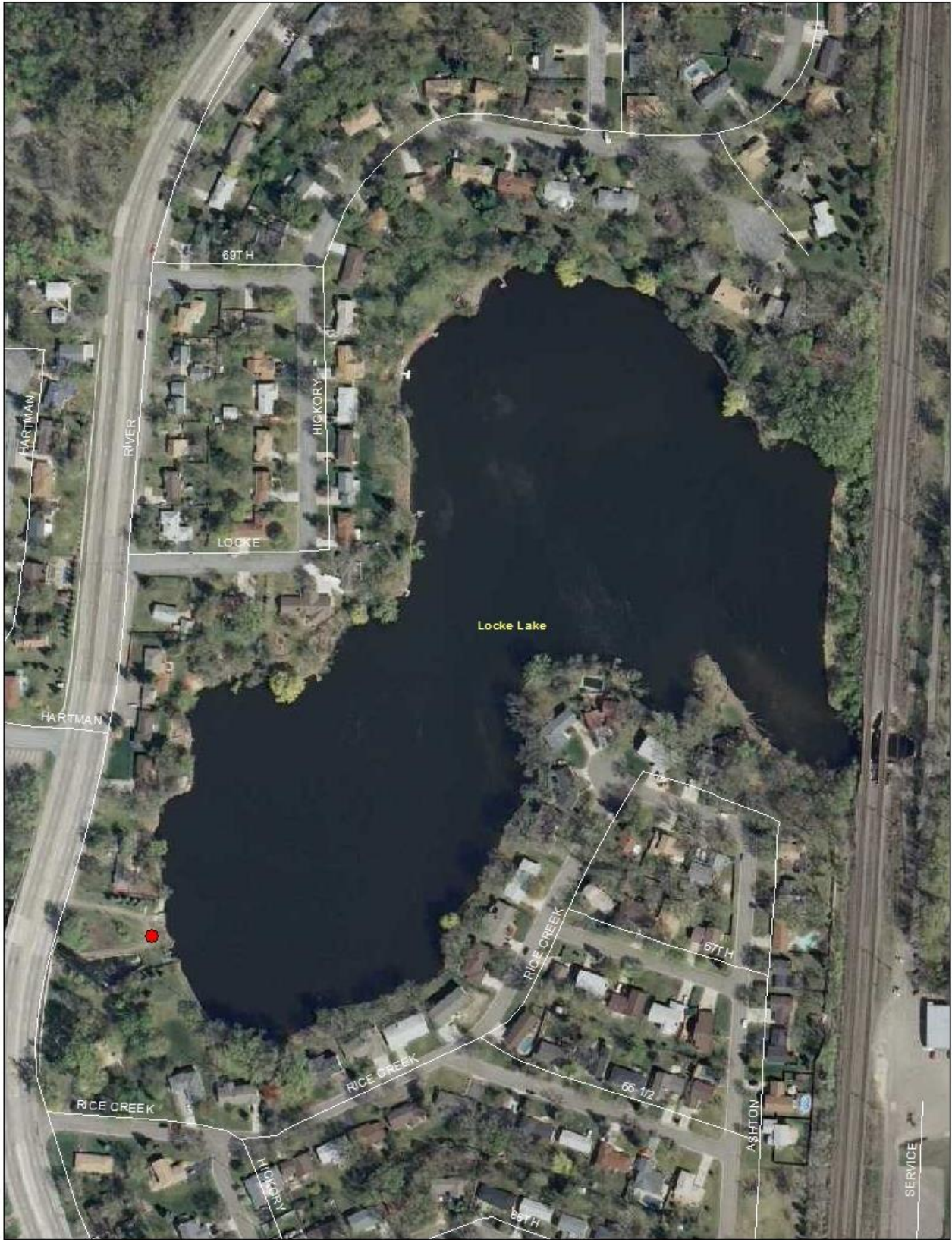


Parking Lot



37. Locke Lake

Task:	Answer	Yes?	No?	Maybe?	Description
Location (City & Watershed org.)	Fridley Rice Creek WD				In Manomin County Park
Owner/Operator	Anoka Co Parks				
Parking for trailers?			X		
Parking for cars?			X		
Disabled parking?			X		
Ramp materials/condition	Paved sidewalk				
Dock(s)?			X		Fishing Pier Present
Toilets?			X		
Trash?		X			
AIS signage			X		
Use level-low, med, high	low				No car access, could launch canoe
Presence of lake association or LID?			X		



Park & Possible Canoe Launch

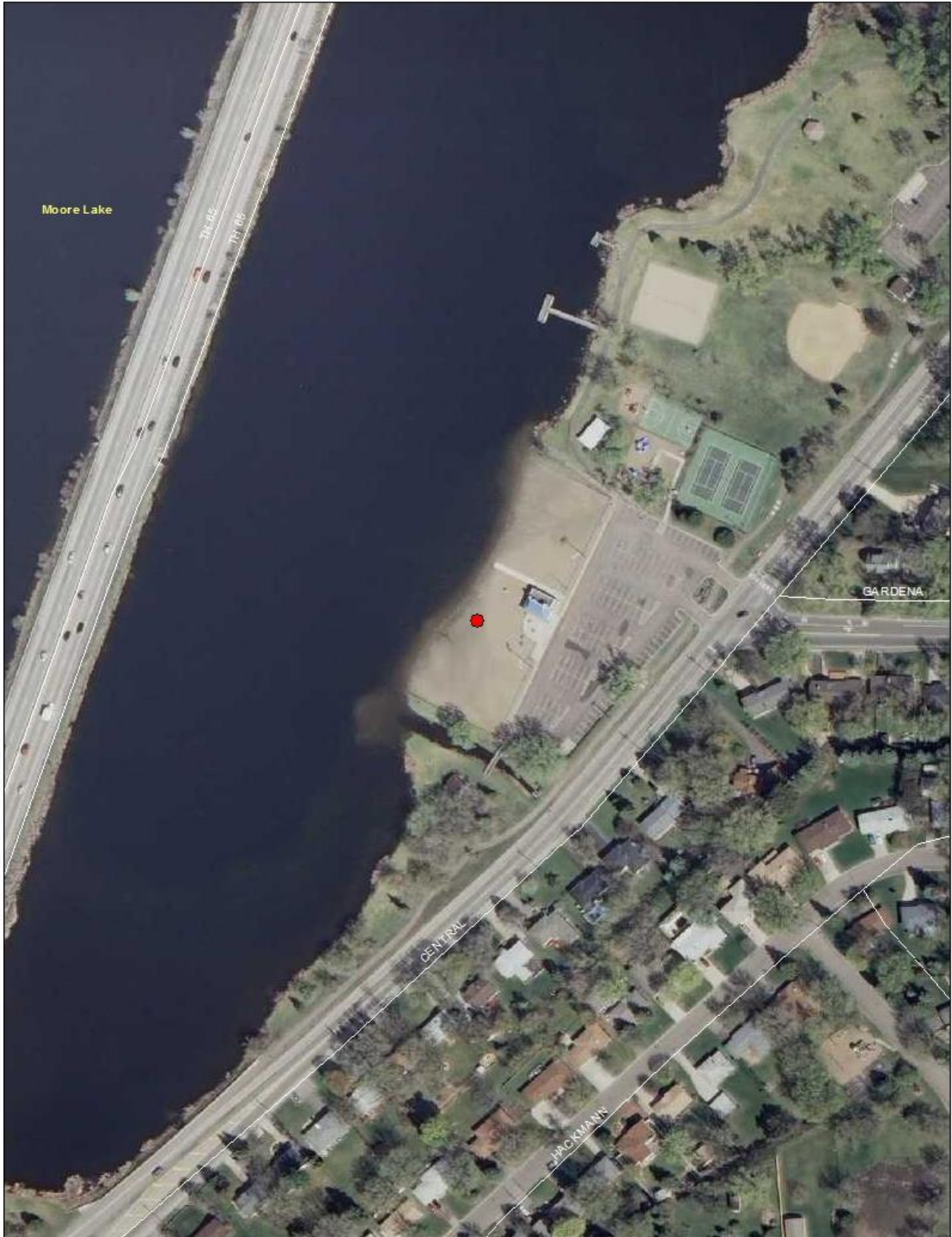


Park Sidewalk Entrance



38. Moore Lake

Task:	Answer	Yes?	No?	Maybe?	Description
Location (City & Watershed org.)	Fridley Rice Creek WD				
Owner/Operator	City of Fridley				
Parking for trailers?		X			Yes, but carry in only
Parking for cars?		X			100
Disabled parking?		X			6
Ramp materials/condition	No Ramp, Carry In Only				
Dock(s)?			X		Fishing Pier to North
Toilets?		X			
Trash?		X			
AIS signage			X		None visible from beach
Use level-low, med, high	High use for swimming, Low for canoeing				
Presence of lake association or Lid?			X		



NE side of park



Center of Park



SW side of park



Center of Park



39. Mississippi River - Riverfront Regional Park

Task:	Answer	Yes?	No?	Maybe?	Description
Location (City & Watershed org.)	Fridley Mississippi River WMO				
Owner/Operator	Anoka Co Parks				
Parking for trailers?		X			
Parking for cars?		X			
Disabled parking?		X			
Ramp materials/condition	Wood Plank				Single Lane Moderate Condition
Dock(s)?			X		
Toilets?				X	Not in winter
Trash?		X			
AIS signage		X			
Use level-low, med, high	Med				
Presence of lake association or LID?			X		



Parking & Sidewalk Entrance



Disabled Parking

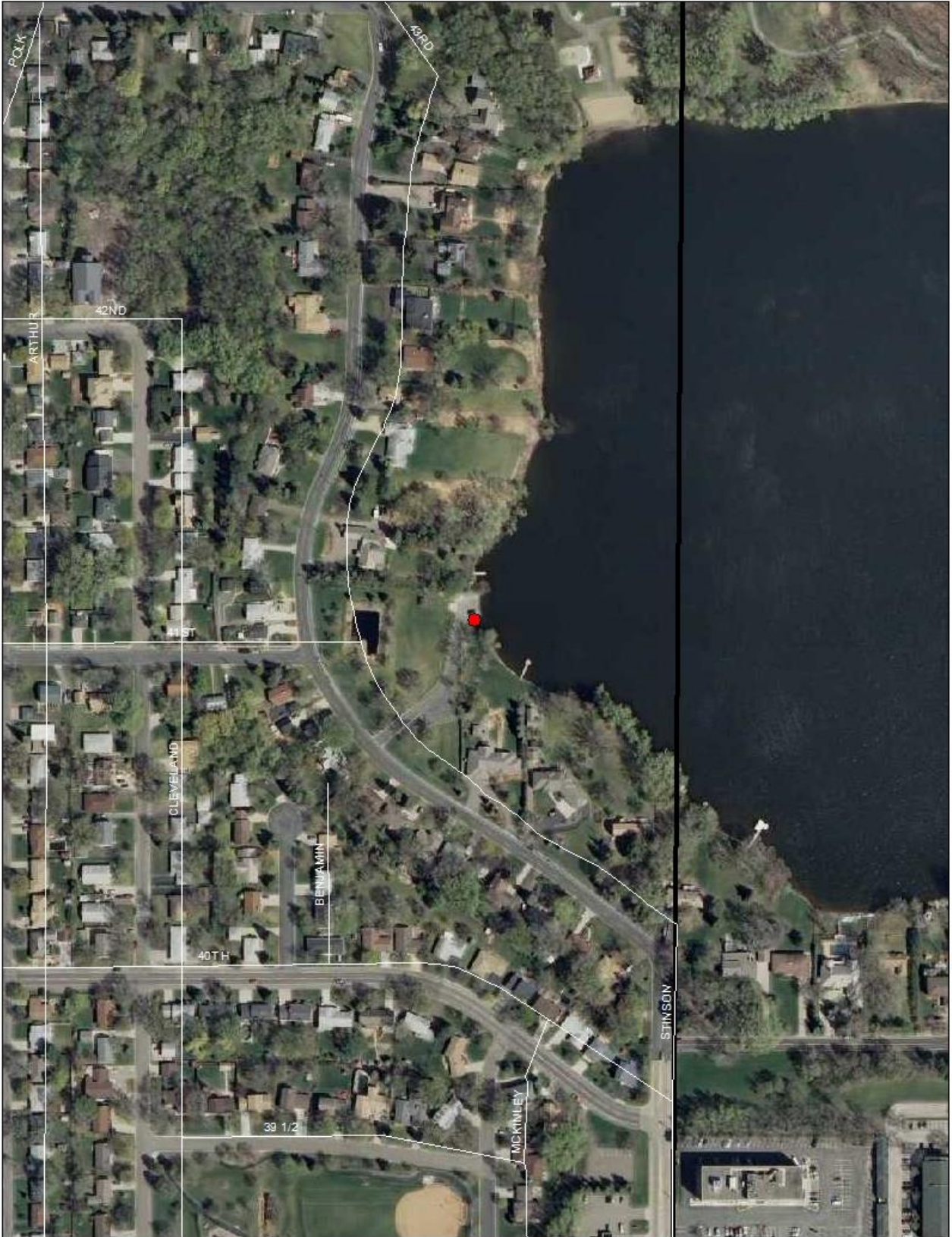


AIS Signage & Ramp



40. Silver Lake

Task:	Answer	Yes?	No?	Maybe?	Description
Location (City & Watershed org.)	Columbia Heights Rice Creek WD				
Owner/Operator	City of Columbia Heights				
Parking for trailers?			X		
Parking for cars?		X	X		5
Disabled parking?			X		
Ramp materials/condition	Asphalt ramp				Moderate Conditions
Dock(s)?			X		
Toilets?			X		
Trash?		X			
AIS signage		X			
Use level-low, med, high	Med				
Presence of lake association or Lid?			X		



Boat Launch Ramp



Road down to ramp



Entrance Sign



Entrance & No Parking sign



Other no parking sign



AIS and garbage



41. Crooked Lake

Task:	Answer	Yes?	No?	Maybe?	Description
Location (City & Watershed org.)	Andover Coon Creek WD				
Owner/Operator	City of Andover				
Parking for trailers?		X			8
Parking for cars?		X			Trailer parking doubles as 2 stnd spots
Disabled parking?		X			2
Ramp materials/condition	Concrete Plank				Single Lane Good Condition
Dock(s)?		X			1
Toilets?		X			1 Not in winter
Trash?		X			
AIS signage		X			
Use level-low, med, high	High				
Presence of Lake Association or LID?		X			LID



Neighboring Picnic Area



Ramp & AIS Signage



More AIS & LID Signage



Parking

